

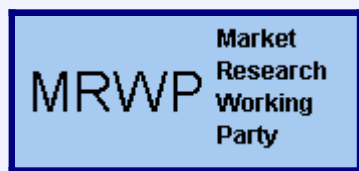


IN VITRO DIAGNOSTIC PRODUCT CLASSIFICATION

Revision 5

I. REAGENTS

2001



Foreword

The first "EDMA Product Classifications for in-vitro Diagnostics Products", prepared by the Association's Classification Working Party were published in May 1988. The classifications were adopted by the Association in the hope that their widespread observance by those who produce in-vitro Diagnostic products and those who are responsible for producing Diagnostic marketing information would contribute significantly to the improvement of standardisation and reliability of European market information.

These hopes have been fulfilled. Market statistics for IVD products have been established in 15 European countries using the "EDMA Classification" for unambiguous definition of the individual product segments.

In 1988 the classification included around 340 individual Diagnostic Parameters comprising 38 groups and 4 major categories.

Significant new product introductions during recent years and some weaknesses which became obvious in the course of using the classification necessitated a comprehensive update of the classification which induced the EDMA Market Research Working Party to prepare the following "In Vitro Diagnostics Product Classification - Revision 5 - 2001".

This Revision includes some 1203 individual Parameters comprising 177 subgroups, 54 groups and 6 major categories.

In addition the Working Party has also prepared a Diagnostic Instrument Classification ("Instrument Grouping") which includes a list of about 600 individual instrument names as examples for the corresponding groups. The current version will be updated and published next year.

It has to be recognised that the extent to which the Working Party's objectives have been achieved will always be a matter of individual judgement. It would be naive for us to assume that the EDMA Classification will meet with unanimous and total agreement. Nevertheless, the many companies who have contributed and participated in its preparation are convinced that this document shows the most logical, practical and relevant In Vitro Diagnostic Reagent and Instrument Classification.

The present Revision 5 - 2001 of the In Vitro Diagnostic Product Classification for Reagents & Instruments has been compiled by the members of the EDMA Market Research Working Party representing several National Associations as well as Corporate Associates. The present composition of the Market Research Working Party is as follows:

Carlos Sisternas (chair)	FENIN	
Patricia De Buyl	EDMA	
Tommaso Bottalico	ASSOBIOMEDICA	Ortho
György Bozi	HIVDA	Diagnosticum
Yann Douet	SFRL	Abbott
Claude Emery		Beckman Coulter
Fernando Gorgolas		Bayer
Daniel Jacobs	FIDIAG	Roche
Philippe Oliva		bioMérieux
Michel Delafon		Becton Dickinson
Elisabeth Scholz		Dade-Behring
Karin Thomaskowitz	VDGH	Dade-Behring
Georg Ulrich		Diamed

Introduction - Reagent Classification

The present *In Vitro Diagnostic Product Classification - I. Reagents (Revision 5 - 2001)* includes several modifications and improvements compared to the "old" 1988 version, and the 1996 and 2000 updates. These are described below.

Categories / Groups / Subgroups:

The previous Categories *Clinical Chemistry, Immunochemistry, Haematology, Microbiology (Culture) and Infectious Immunology* basically have not changed. A new category "Genetic Testing" has been included.

For several good and practical reasons many **Groups** are now broken down into **Subgroups** at an additional level.

In general each category now includes the groups "Multiple Parameters", "Controls, Standards and Calibrators", and "**Rapid Tests**" with the exception of Haematology, where Rapid Tests are included as a subgroup in each group when appropriate.

Parameters:

The major purpose of this classification is to record all individual products that are currently available on the market by parameter. Even products of minor importance which previously fell under "others" when using the classification for market statistics have to be listed individually for unmistakable allocation to the correct subgroup or group. While the 1988 version included around 340 individual parameters the current Revision 5 includes some 1203 individual parameters comprising 177 subgroups, 54 groups and 6 major categories.

EDMA-CODE - Classification Number:

The split of the category Microbiology, the establishment of the subgroups (Level 3) and the addition of around 600 parameters required some significant changes in the numbering system.

Principally it should be understood that the numbers we call "EDMA-CODE" are to identify the individual parameters and which subgroups, groups and categories they belong to.

There are five pairs of digits, which describe the different classification levels. The first two digits describe the **Category**, the second two digits identify the **Group** within each category, the third pair of digits relates to the **Subgroup** and the fourth two digits identify the individual **Parameter**. The last two digits, currently 00, are reserved for the planned breakdown by technical **Method**, which will be worked out by the MRWP as a next step. (For the current trade association statistics only RIA vs. Non-Isotopic is considered).

For example: 12 03 01 33 00 Prostatic Specific Antigen (PSA)

Level 1	12 = Category.....	<i>Immunochemistry Reagents</i>
Level 2	03 = Group.....	<i>Tumour Markers</i>
Level 3	01 = Subgroup.....	<i>Cancer Antigens</i>
Level 4	33 = Parameter.....	<i>Prostatic Specific Antigen (PSA)</i>
Level 5	00 = Method.....	<i>e.g. Non-Isotopic</i>

This system allows to uniquely identify each individual product / parameter and rapidly find them in any listings, e.g. in statistical tables.

There have been several discussions about codification. To avoid any misunderstanding it should be noted that for the use of data processing for statistics, sequential codes are considered appropriate, e.g. starting with 1 for 5'-Nucleotidase and ending with 914 for CMV-Rapid Test. New parameters will then continue with 915 and so on. This is a data processing issue and is not of direct concern for the classification.

cr = cross reference:

In general each parameter exists only once in this classification.

There are a few exceptions, for example: *Angiotensin Converting Enzyme* is available as Clinical Chemistry parameter as well as Immunoassay. In such cases **cr** is indicated before the parameter's name and it is referred to the category and the EDMA-CODE where the other product is allocated.

11 01 01 09 00 cr Angiotensin Converting Enzyme (CC) IC =>12 06 02 03 00 ACE

12 06 02 03 00 cr Angiotensin Converting Enzyme (IC) CC =>11 01 01 09 00 ACE

(Abbreviations are: cr = cross reference, CC = Clinical Chemistry, IC = Immunochemistry,
HE = Haematology, MB = Microbiology, II = Infectious Immunology,
GE = Genetic Testing)

Further developments of the IVD Classification:

The EDMA classification is also being used as a basis for registration of product in Europe waiting for the availability of the Global Medical Device Nomenclature (GMDN). GMDN is a joint CEN-ISO project, funded by the European Commission, and developed by harmonising several existing regional systems in order to produce an international nomenclature. For IVDs, the EDMA Classification has been largely used. GMDN is still a draft but should be available by end of 2001.

General remarks:

This classification has been compiled with the best knowledge and conscience of the team members. Numerous comments and suggestions of colleagues of the Diagnostic industry have been adopted. However, nothing is ever complete. There are some abbreviations missing and there may be some typing errors. Due to new product launches and changing market requirements the Classification will be changed. To allow for new product launches and changing market trends the document will be reviewed on annual basis and amended as necessary.

It has been agreed that no significant changes will be made to this document for a period of at least five years, but it is intended to make a yearly update according to necessary corrections and amendments.

Any comments, suggestions or amendments for improvements are appreciated and should be directed at any time to :

Daniel Jacobs
Chair Classification Task Force
EDMA Market Research Working Party
Roche Diagnostics
Av des Croix de Guerre 90
1120 Neder Over Heembeek
Belgium
Tel : +32 2 247 46 19
Fax : +32 2 247 46 80
daniel.jacobs@roche.com

Or to :

EDMA
Place St Lambert 14
1200 Woluwé St Lambert, Brussels
Tel: +32 2 772 22 25
Fax: +32 2 772 23 29
edma@edma-ivd.be

This Reagent Classification is also available on diskette in Microsoft Excel Version Office 97

And on the EDMA website (www.edma-ivd.be)

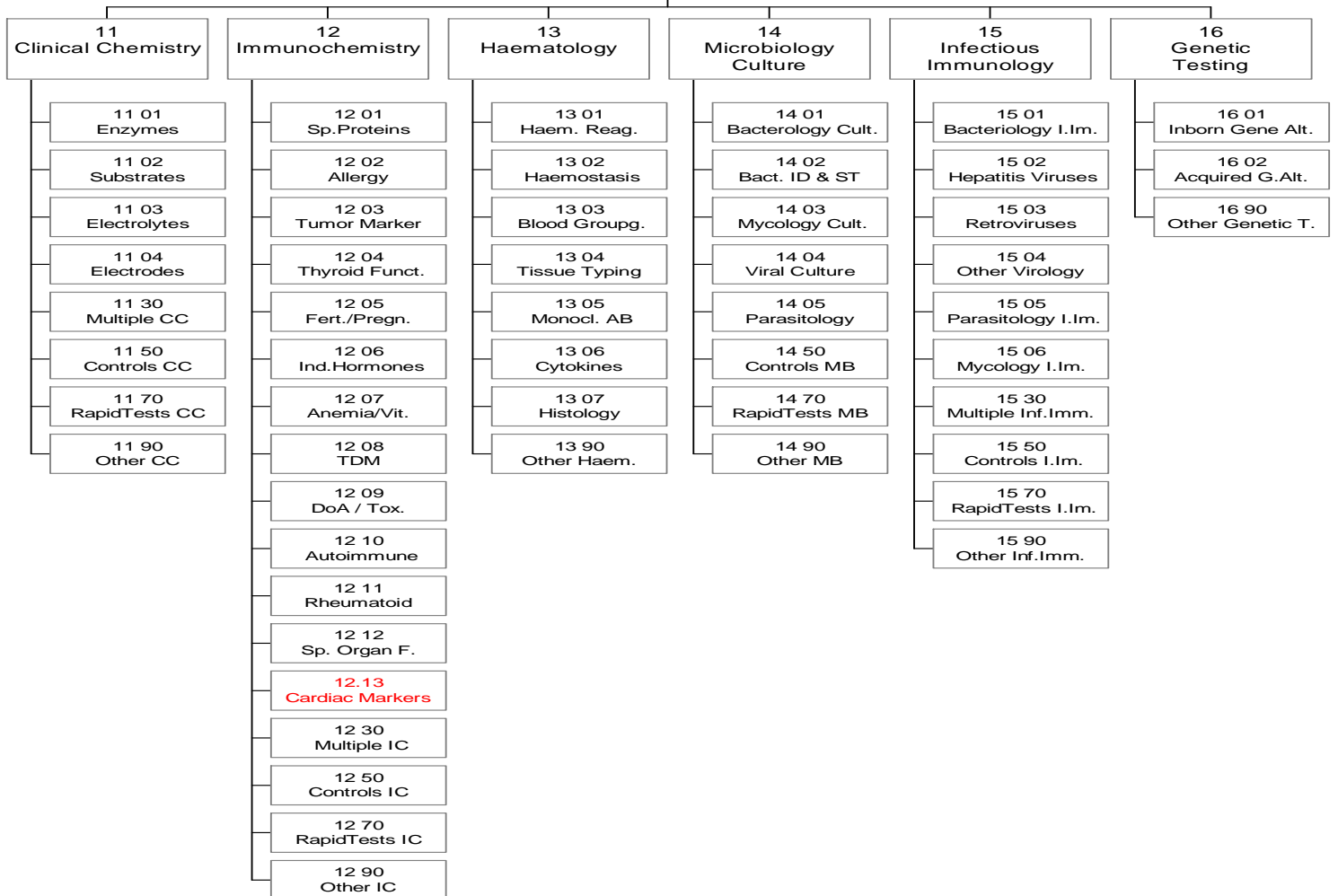
Table of Contents

		Page
Diagram: Reagent Classification	Level 1 - 2	6
Reagent Classification Overview	Level 1 - 3	7
Reagent Classification	Level 1 - 4	13
- Clinical Chemistry		13
- Immunochemistry		13
- Haematology		28
- Microbiology - Culture		32
- Infectious Immunology		35
- Genetic Testing		42
Alphabetical Order by Parameter	Level 1 - 4	43

Diagram Reagent Classification Level 1 - 2

Diagrammtitel

EDMA Classification 2001
REAGENTS



Reagent Classification Overview Level 1 - 3

Page

1	REAGENTS	
11	Clinical Chemistry	13
11 01	Enzymes	
11 01 01	Enzymes (Reagents)	
11 02	Substrates	14
11 02 01	Substrates (Reagents)	
11 03	Electrolytes (excluding Electrodes)	
11 03 01	Electrolytes (Reagents)	
11 04	Electrodes and Biosensors	15
11 04 01	Electrolyte Electrodes	
11 04 02	Blood Gas Electrodes	
11 04 03	Substrate Electrodes / Biosensors	
11 04 04	Reference Material and Buffers (Electrolytes)	
11 30	Multiple Parameters - Clinical Chemistry	
11 30 01	Multiple - Clin. Chem. Lab Reagents	
11 30 04	Multiple Parameter Electrodes/Biosensors	
11 50	Controls/Standards/Calibrators Clinical Chemistry	16
11 50 01	Multicomponent Control Sera (Clinical Chemistry)	
11 50 02	Specific Control Sera (Clinical Chemistry)	
11 50 03	Calibrators and Standards (Clinical Chemistry)	
11 50 30	Multiple Parameters Calibrators and Standards Electrodes/Biosensors	
11 50 90	Other Controls Clinical Chemistry	
11 70	Rapid Tests - Clinical Chemistry	
11 70 01	Blood Test Strips (CC)	
11 70 02	Urine Testing (CC)	
11 70 03	Faeces Tests (CC)	
11 70 90	Other Clin.Chem. Rapid Tests	
11 90	Other Clinical Chemistry	
11 90 01	Other Clinical Chemistry (Reagents)	

12		Immunochemistry (Immunology)	17
12	01	Specific Proteins	
12	01	01 Immunoglobulins (without IgE)	
12	01	02 Complement Components	
12	01	03 Transport Proteins	
12	01	04 Lipoproteins	
12	01	90 Other Specific Proteins	
12	02	Allergy	
12	02	01 Allergy (Reagents)	
12	03	Tumour Markers	
12	03	01 Cancer Antigens	
12	03	02 Receptor Assays	19
12	03	03 Oncoproteins	
12	03	90 Other Tumour Markers	
12	04	Thyroid Function Hormones	19
12	04	01 Thyroid Function Hormones (Reagents)	
12	05	Fertility / Pregnancy Hormones / Proteins	
12	05	01 Fertility Function Hormones / Proteins	
12	05	02 Pregnancy Testing Hormones / Proteins	20
12	06	Individual and Specified Hormones	20
12	06	01 Diabetes Assays (Hormones)	
12	06	02 Renal Metabolism Assays	
12	06	03 Bone and Mineral Metabolism Assays	
12	06	04 Endocrine Hormones and Peptides	21
12	06	05 Neuroendocrine Function Assays	
12	06	90 Other Individual and Specified Hormones	
12	07	Anemia Related / Vitamin Tests	
12	07	01 Anemia	
12	07	02 Vitamines	22
12	07	03 Multiple - Anemia Related / Vitamin Tests	
12	08	Therapeutic Drug Monitoring	
12	08	01 Cardiovascular TDM	
12	08	02 Central Nervous Systems TDM	
12	08	03 Antibiotic TDM	
12	08	04 Anti-Asthma TDM	
12	08	05 Anti-Neoplastic TDM	23
12	08	06 Immunosuppressant TDM	
12	09	Drugs of Abuse / Toxicology	
12	09	01 Drugs of Abuse	
12	09	02 Toxicology	
12	10	Auto-Immune Diseases	24
12	10	01 Autoimmune Connective Tissue Diseases	
12	10	02 Neuro-Auto-Immunology	
12	10	03 Thyroid-Auto-Immune Disease	
12	10	90 Other Auto-Immune Disease Tests	25
12	11	Rheumatoid Diseases	
12	11	01 Rheumatoid Diseases (Reagents)	
12	12	Specific Organ Function Assays	
12	12	01 Liver Function (Immunochemistry)	

12	13		Cardiac Markers	
12	13	01	Cardiac Markers (Reagents)	
12	30		Multiple Parameters - Immunochemistry	26
12	30	01	Multiple - Immunochemistry Reagents	
12	50		Controls/Standards/Calibrators Immunochemistry	
12	50	01	Controls/Standards/Calibrators Immunochemistry	
12	70		Rapid Tests - Immunochemistry	
12	70	01	Specific Proteins Rapid Tests	
12	70	03	Tumour Markers Rapid Tests	
12	70	05	Fertility / Pregnancy Rapid Tests	
12	70	08	TDM - Rapid Tests	
12	70	09	Drugs of Abuse - Toxicology Rapid Tests	27
12	70	11	Rheumatoid - Inflammatory - Rapid Tests Rapid Tests	
12	70	13	Cardiac markers - Rapid Tests	
12	70	90	Other Rapid Tests	
12	90		Other Immunochemistry	
12	90	01	Other Immunochemistry (Reagents)	
				Page
13			Haematology / Histology / Cytology	28
13	01		Haematology Reagents	
13	01	01	Reagents for (Automated) Haematology Analyzer	
13	01	02	Haemoglobin (Types) Testing	
13	01	03	Cellular Stains for Microscopy	
13	01	09	Other Haematology Testing Reagents	
13	01	20	Haematology Controls and Calibrators	
13	01	70	Rapid Haematology Tests (Point-Of-Care/Near Patient)	
13	01	90	Other Haematology Reagents	
13	02		Haemostasis Reagents (Coagulation)	
13	02	01	General Coagulation Tests	
13	02	02	Coagulation Factors	29
13	02	03	Special Coagulation Tests	
13	02	04	Platelet Factors	
13	02	05	Fibrinolysis	
13	02	06	Coagulation Inhibitors/Thrombophilia Markers	30
13	02	50	Haemostasis Controls	
13	02	70	Haemostasis Rapid Tests (Home Monitoring)	
13	02	80	Auxiliary Reagents and Supplements (Haemostasis)	
13	02	90	Other Haemostasis Reagents	

13	03		Immunohaematology ("Blood Grouping")	
13	03	01	ABO Typing	
13	03	02	Rhesus Typing	
13	03	03	Other Antigen Typing	
13	03	04	Antibody detection (Immunohaematology)	
13	03	20	Immunohaematology Controls	
13	03	90	Other Immunohaematology Tests	
13	04		Tissue Typing	31
13	04	01	Tissue Typing Reagents	
13	05		Monoclonal Antibodies for Cell Surface Antigens	
13	05	01	Monoclonal Antibodies for Cell Surface Antigens	
13	06		Cytokines (Lymphokines) / Immunomodulators	
13	06	01	Cytokines (Lymphokines) / Immunomodulators	
13	07		Histology/Cytology	
13	07	01	Histology/Cytology Reagents	
13	90		Other Haematology	
13	90	01	Other Haematology	
				Page
14			Microbiology (Culture)	32
14	01		Bacteriology - Culture	
14	01	01	Dehydrated Culture Media (Bacteriology)	
14	01	02	Prepared Media in Tubes (Bacteriology)	
14	01	03	Prepared Media in Bottles (Bacteriology)	
14	01	04	Prepared Media in Plates (Bacteriology)	
14	01	05	Blood Culture - Manual	
14	01	06	Blood Culture / Mycobacteria Culture - Automated	
14	01	07	Urine Screening (Bacteriology)	
14	01	08	Stains, Buffers etc (Bacteriology)	
14	02		Bacteriology - Identification & Susceptibility Testing	33
14	02	01	Biochemical Identification - Automated	
14	02	02	Biochemical Identification - Manual	
14	02	03	Immunological Identification	
14	02	04	Susceptibility Testing - Automated	
14	02	05	Susceptibility Testing - Manual	
14	02	06	Nucleic Acid Identification (Bacteriology)	
14	03		Mycology	34
14	03	01	Dehydrated Culture Media (Mycology)	
14	03	02	Prepared Media in Plates (Mycology)	
14	03	03	Tubes and Bottled Media for Yeasts and Fungi	
14	03	04	Identification (Mycology)	
14	03	05	Serological Identification (Mycology)	
14	03	06	Susceptibility Testing (Mycology)	
14	04		Viral Culture	
14	04	01	Tissue Culture	
14	05		Parasitology (Microbiology)	
14	05	01	Extraction Reagents	
14	05	02	Serological Detection and Identification (Parasitology)	

14	50		Controls/Standards/Calibrators - Microbiology	
14	50	01	Controls/Standards/Calibrators - Microbiology	
14	70		Rapid Tests - Microbiology	
14	70	01	Rapid Tests - Microbiology	
14	90		Other Microbiology	
14	90	01	Other Microbiology Reagents	
15			Infectious Immunology	Page 35
15	01		Bacteriology (Infect. Immunology)	
15	01	01	Chlamydia	
15	01	02	Gonococci	
15	01	03	Syphilis	
15	01	04	Helicobacter Pylori	
15	01	05	Legionella	
15	01	06	Lyme Borreliosis	
15	01	07	Mycobacteria genus + species	
15	01	08	Mycoplasma	
15	01	09	Pseudomonas Aeruginosa	36
15	01	10	Salmonella	
15	01	11	Streptococci	
15	01	12	Staphylococci	
15	01	13	Listeria	
15	01	14	Campylobacter	
15	01	15	Escherichia Coli	
15	01	40	Other Bacteriology - NA Reagents	
15	01	90	Other Bacteriology Immunoassays	37
15	02		Hepatitis Viruses	
15	02	01	Hepatitis A Virus	
15	02	02	Hepatitis B Virus	
15	02	03	Hepatitis C Virus	
15	02	04	Hepatitis Delta Virus	38
15	02	05	Hepatitis E Virus	
15	02	07	Hepatitis G Virus	
15	02	24	Hepatitis X Virus	
15	02	90	Other Hepatitis Viruses	
15	03		Retroviruses	
15	03	01	HIV 1	
15	03	02	HIV 2	
15	03	10	HIV P24	39
15	03	20	HIV - Multiple (1 / 2)	
15	03	30	HTLV I	
15	03	31	HTLV II	
15	03	40	HTLV Multiple	
15	04		Other Virology (Infect. Immunology)	
15	04	01	Rubella Virus	
15	04	02	Cytomegalovirus	
15	04	03	Herpes Simplex Virus	
15	04	04	Epstein Barr Virus	40
15	04	40	Other Virology - NA Reagents	
15	04	80	Other Virology Antigen/Antibody Detection	
15	04	90	Other Other Virology	
15	05		Parasitology (Infect. Immunology)	
15	05	01	Toxoplasma	
15	05	10	Miscellaneous Parasitology (Antibodies)	

15	06		Mycology (Infect. Immunology)
15	06	01	Mycology Immunoassays
15	30		Multiple Parameters - Infect. Immunology
15	30	02	Multiple Viruses
15	50		Controls/Standards/Calibrators - Infect. Immunology
15	50	01	Controls/Standards/Calibrators - Infect. Immunology
15	70		Rapid Tests - Infectious Immunology
15	70	01	Bacteriology Rapid Tests
15	70	02	Hepatitis Viruses Rapid Tests
15	70	03	Retroviruses Rapid Test
15	70	90	Other Virology Rapid Tests
15	90		Other Infectious Immunology
15	90	01	Other Infectious Immunology

16			Genetic Testing	42
			(= in vitro tests for the detection of gene and chromosome alterations)	

16	01		Inborn Gene or Chromosome Alterations
16	01	01	Monogenetic Disorders
16	01	02	Polygenetic Disorders
16	01	03	Chromosomal Disorders
16	01	04	Polymorphisms
16	02		Acquired Gene or Chromosome Alterations
16	02	01	Cancer Causing / Related Alterations
16	90		Other Genetic Testing
16	90	01	Other Genetic Testing

1

REAGENTS

11

Clinical Chemistry

11 01

Enzymes

11 01 01

Enzymes

11	01	01	01	00		5'-Nucleotidase		NTP
11	01	01	02	00	cr	Acid Phosphatase (CC)	IC => 12.03.01.37	ACP
11	01	01	03	00		Alanine Amino-Transferase		ALT/SGPT
11	01	01	04	00		Aldolase		ALS
11	01	01	05	00		Alkaline Phosphatase - Total		ALP/AP
11	01	01	06	00	cr	Alkaline Phosphatase Isoenzymes(CC)	IC => 12.06.03.01	iso-AP
11	01	01	07	00		Amylase - Total		AMS/AMY
11	01	01	08	00		Amylase Isoenzyme		iso-AMS
11	01	01	09	00	cr	Angiotensin Converting Enzyme (CC)	IC =>12.06.02.03	ACE
11	01	01	10	00		Aspartate Amino-Transferase		AST/SGOT
11	01	01	11	00		Cholinesterase		CHE
11	01	01	12	00		Chymotrypsin		
11	01	01	13	00		Creatine Kinase - Total		CK
11	01	01	14	00	cr	Creatine Kinase - MB "Activity"(CC)	IC =>12.01.05.02	CK-MB
11	01	01	15	00		Creatine Kinase Isoenzymes		iso-CK
11	01	01	16	00		Gamma Glutamyltransferase		GGT
11	01	01	17	00		Glutamate Dehydrogenase		GLDH
11	01	01	18	00		Hydroxybutyrate Dehydrogenase		HBDH
11	01	01	19	00		Lactate Dehydrogenase L (LDH - L --> P)		LDH-L
11	01	01	20	00		Lactate Dehydrogenase P (LDH - P --> L)		LDH-P
11	01	01	21	00		Lactate Dehydrogenase Isoenzymes		iso-LDH
11	01	01	22	00		Leucine Aminopeptidase		LAP
11	01	01	23	00		Lipase		LPS
11	01	01	24	00		Lysozyme		
11	01	01	25	00		Malate Dehydrogenase		MDH
11	01	01	26	00		N-acetyl-β,D-Glucosaminidase		β-NAG
11	01	01	27	00		Pepsin		PPS
11	01	01	28	00		Phospho Hexose Isomerase		PHI
11	01	01	29	00		Sorbitol Dehydrogenase		SDH
11	01	01	30	00	cr	Trypsin (CC)	IC =>12.01.90.07	TPS
11	01	01	90	00		Other Enzymes		

11	02					Substrates		
11	02	01					Substrates	
11	02	01	01	00	cr	Albumin (CC)	IC =>12.01.03.01	
11	02	01	02	00		Bile acids		
11	02	01	03	00		Bilirubin		
11	02	01	04	00		Urea/Blood Urea Nitrogen		BUN
11	02	01	05	00		Cholesterol		
11	02	01	06	00		Copper		Cu
11	02	01	07	00		Creatinine		
11	02	01	08	00		D-Xylose		
11	02	01	09	00		Delta-Aminolaevulinic acid		ALAD
11	02	01	10	00		Fructosamine		
11	02	01	11	00		Fructose		
11	02	01	12	00		Galactose		
11	02	01	13	00		Glucose		
11	02	01	14	00	cr	Glycosylated/Glycated Haemoglobin	IC=12.06.01.06	HbA1/HbA1C
11	02	01	15	00		High Density Lipoprotein Cholesterol		HDL-C
11	02	01	16	00	cr	Iron (CC)	IC =>12.07.01.04	Fe
11	02	01	17	00	cr	Iron Binding Capacity - Total (CC)	IC =>12.07.01.05	TIBC
11	02	01	18	00		Lactate		
11	02	01	19	00		Lecithin		
11	02	01	20	00		Lipoprotein, Chemical determination/detection		
11	02	01	21	00		Low Density Lipoprotein Cholesterol		LDL-C
11	02	01	22	00		Non Esterified Fatty Acids		NEFA
11	02	01	23	00		Oxalate		
11	02	01	24	00		Phospholipids		
11	02	01	25	00		Porphobilinogen		
11	02	01	26	00		Pyruvate		
11	02	01	27	00		Thymol		
11	02	01	28	00		Total Lipids		
11	02	01	29	00		Total Porphyrine		
11	02	01	30	00		Total Protein		
11	02	01	31	00		Triglycerides		
11	02	01	32	00		Uric Acid		
11	02	01	33	00		Zinc		
11	02	01	34	00		Lipoprotein Electrophoresis		
11	02	01	35	00		Protein Electrophoresis		
11	02	01	36	00		Phenylketonuria		
11	02	01	90	00		Other Substrates		

11	03				Electrolytes (excluding Electrodes)	
11	03	01			Electrolytes (Reagents)	
11	03	01	01	00	Ammonia	NH3
11	03	01	02	00	Bicarbonate	HCO3
11	03	01	03	00	Calcium	Ca
11	03	01	04	00	Chloride	Cl
11	03	01	06	00	Lithium	Li
11	03	01	07	00	Magnesium	Mg
11	03	01	08	00	Phosphate inorganic / Phosphorus	PO3
11	03	01	09	00	Potassium	K
11	03	01	10	00	Sodium	Na
11	03	01	90	00	Other Electrolytes	
11	04				Electrodes and Biosensors	
11	04	01			Electrolyte Electrodes	
11	04	01	01	00	Ammonia - Electrodes	NH3
11	04	01	02	00	Calcium - Electrodes	Ca
11	04	01	03	00	Chloride - Electrodes	Cl
11	04	01	04	00	Lithium - Electrodes	Li
11	04	01	05	00	Magnesium - Electrodes	Mg
11	04	01	06	00	Potassium - Electrodes	K
11	04	01	07	00	Sodium - Electrodes	Na
11	04	01	90	00	Other Electrolytes Electrodes	
11	04	02			Blood Gas Electrodes	
11	04	02	01	00	Carbon Dioxide - Electrodes	pCO2
11	04	02	02	00	pH - Electrodes	pH
11	04	02	03	00	Oxygen - Electrodes	pO2
11	04	02	90	00	Other Blood Gas Electrodes	
11	04	03			Substrate Electrodes / Biosensors	
11	04	03	01	00	Creatinine - Electrodes	
11	04	03	02	00	Glucose - Electrodes	
11	04	03	03	00	Glycated Haemoglobin - Electrodes	
11	04	03	04	00	Lactate - Electrodes	
11	04	03	05	00	Urea - Electrodes	
11	04	03	06	00	Bilirubin - Electrodes	
11	04	03	90	00	Other Substrate - Electrodes / Biosensors	
11	04	04			Reference Material and Buffers (Electrolytes)	
11	04	04	01	00	Reference Electrodes	
11	04	04	02	00	Electrolyte Electrode Buffers and Solutions	
11	04	04	03	00	Blood Gas Buffers and Solutions	
11	04	04	04	00	Substrate Electrode Buffers and Solutions	
11	04	04	05	00	Common Buffers and Solutions (Electrolytes)	
11	04	04	90	00	Other Buffers and Solutions (Electrolytes)	

11	30				Multiple Parameters - Clinical Chemistry
11	30	01			Multiple - Clin. Chem. Lab Reagents
11	30	01	01	00	Multiple Enzymes only - Clin. Chem Lab R.
11	30	01	02	00	Multiple Substrates only - Clin. Chem Lab R.
11	30	01	03	00	Multiple Electrolytes only - Clin. Chem Lab R.
11	30	01	11	00	Multiple Parameters (Mix of all) - Clin. Chem Lab R.
11	30	01	90	00	Other Multiple Clin. Chem Lab Reagents
11	30	04			Multiple Parameter Electrodes/Biosensors
11	30	04	01	00	Multiple Enzymes only - Electrodes/Biosensors
11	30	04	02	00	Multiple Substrates only - Electrodes/Biosensors
11	30	04	03	00	Multiple Electrolytes only - Electrodes/Biosensors
11	30	04	04	00	Multiple Blood Gas only - Electrodes/Biosensors
11	30	04	11	00	Multiple Parameters (Mix of all) - Electrodes/Biosensors
11	30	04	90	00	Other Multiple Parameter - Electrodes/Biosensors
11	50				Controls/Standards/Calibrators Clinical Chemistry
11	50	01			Multicomponent Control Sera (Clinical Chemistry)
11	50	01	01	00	Assayed Multicomponent Sera (CC)
11	50	01	03	00	Unassayed Multicomponent Sera (CC)
11	50	01	90	00	Other Multicomponent Sera (CC)
11	50	02			Specific Control Sera (Clinical Chemistry)
11	50	02	01	00	Enzyme Control Sera
11	50	02	02	00	Lipid Control Sera
11	50	02	03	00	Bilirubin Control Sera
11	50	02	04	00	Electrolyte Controls
11	50	02	05	00	Diabetes Controls
11	50	02	90	00	Other Specific Control Sera (CC)
11	50	03			Calibrators and Standards (Clinical Chemistry)
11	50	03	01	00	Calibrators Multicomponent (CC)
11	50	03	02	00	Calibrators Single Component (CC)
11	50	03	03	00	Aqueous Standards (CC)
11	50	03	90	00	Other Calibrators and Standards (Clinical Chemistry)
11	50	30			Multiple Parameter Calibrators and Standards Electrodes/Biosensors (Clinical Chemistry)
11	50	30	01	00	Multiple Parameter Calibrators and Standards Electrodes/Biosensors
11	50	90			Other Controls Clinical Chemistry
11	50	90	01	00	Blood gas control
11	50	90	02	00	Urine Control
11	50	90	03	00	CSF controls
11	50	90	90	00	Other, Other Controls Clinical Chemistry

11	70								Rapid Tests - Clinical Chemistry
11	70	01							Blood Test Strips (CC)
11	70	01	01	00					Glucose Test Strips
11	70	01	02	00					Cholesterol Test Strips
11	70	01	03	00					HDL Test Strips
11	70	01	04	00					Lactate Test Strips
11	70	01	05	00					Triglyceride Test Strips
11	70	01	06	00					Urea Test Strips
11	70	01	07	00					HbA1c Test Strips
11	70	01	50	00					Calibrators and Controls (Blood Test Strips)
11	70	01	90	00					Other Blood Test Strips
11	70	02							Urine Testing (CC)
11	70	02	01	00					Urine Single Test Strips (incl. tablets)
11	70	02	02	00					Urine Multi-Constituent Test Strips
11	70	02	10	00					Urine Sediment Test Kit
11	70	02	90	00					Other Urine Testing
11	70	03							Faeces Tests (CC)
11	70	03	01	00	cr				Faecal Occult Blood (CC) IC =>12.03.90.04 FOB
11	70	03	02	00					Albumin in stool (Meconium)
11	70	03	90	00					Other Faeces Tests
11	70	90							Other Clin.Chem. Rapid Tests
11	70	90	90	00					Other Clin. Chem. Rapid Tests
11	90								Other Clinical Chemistry
11	90	01							Other Clinical Chemistry (Reagents)
11	90	01	01	00					Buffers (unassignable), Supplem. Reagents, etc (CC)
11	90	01	10	00					Electrophoresis Media (unassignable)
11	90	01	90	00					Other, Other Clinical Chemistry Reagents

12					Immunochemistry (Immunology)			
12	01				Specific Proteins			
12	01	01			Immunoglobulins (without IgE)			
12	01	01	01	00	Immunoglobulin A		IgA	
12	01	01	02	00	Immunoglobulin A subclass reagents			
12	01	01	03	00	Immunoglobulin D		IgD	
12	01	01	04	00	Immunoglobulin D subclass reagents			
12	01	01	05	00	Immunoglobulin G		IgG	
12	01	01	06	00	Immunoglobulin G subclass reagents			
12	01	01	07	00	Immunoglobulin M		IgM	
12	01	01	08	00	Immunoglobulin M subclass reagents			
12	01	01	20	00	Kappa and Lambda chain			
12	01	01	30	00	Immuno-electrophoresis kits			
12	01	01	31	00	Immunofixation kits			
12	01	01	40	00	Anti Human Ig polyvalent antisera			
12	01	01	50	00	Human anti-mouse antibody		HAMA	
12	01	01	80	00	Buffers (unassignable), Supplem. Reagents, etc (Ig's)			
12	01	01	90	00	Other Immunoglobulins			
12	01	02			Complement Components			
12	01	02	01	00	Complement Component C1q		C1q	
12	01	02	02	00	Complement Component C1 inactivator		C1 INA	
12	01	02	03	00	Complement Component C3/C3c		C3/C3c	
12	01	02	04	00	Complement Component for Bb		FBb	
12	01	02	05	00	Complement Component C4		C4	
12	01	02	06	00	Complement Component C5a		C5a	
12	01	02	07	00	Complement Component C5-9		C5-9	
12	01	02	11	00	Total Complement Activity (CH50)		CH50	
12	01	02	90	00	Other Complement Components			
12	01	03			Transport Proteins			
12	01	03	01	00	cr Albumin (IC) incl. uAlbumin	CC =>11.02.01.01	IC=>12 70 01 01	
12	01	03	02	00	Ceruloplasmin			
12	01	03	03	00	Haptoglobin			
12	01	03	04	00	Haemopexin			
12	01	03	05	00	Lactoferrin			
12	01	03	06	00	Pre-albumin / Transthyretin			
12	01	03	07	00	Retinol Binding Protein		RBP	
12	01	03	08	00	Transferrin			
12	01	03	09	00	Transcobalamin (S)			
12	01	03	90	00	Other Transport Proteins			

12	01	04			Lipoproteins	
12	01	04	01	00	Apolipoprotein A I	Apo A I
12	01	04	02	00	Apolipoprotein A II	Apo A II
12	01	04	03	00	Apolipoprotein B	Apo B
12	01	04	11	00	cr Apolipoprotein E	Genotyping Sub-typing GT=>16 01 02 03 00 Atherosclerosis
12	01	04	21	00	Lipoprotein (a)	LP (a)
12	01	04	90	00	Other Lipoproteins	
12	01	90			Other Specific Proteins	
12	01	90	01	00	a1-Acid Glycoprotein (Orosomuroid)	AGP
12	01	90	02	00	a1-Antitrypsin (Protease inhibitor)	AAT
12	01	90	03	00	a2-Macroglobulin	A2M
12	01	90	04	00	a1-Microglobulin	A1M
12	01	90	05	00	Fibronectin	
12	01	90	06	00	Trypsin-a1-Antitrypsin (Elastase)	
12	01	90	07	00	cr Trypsin (IC)	CC =>11.01.01.30
12	01	90	08	00	Trypsin Neonatal	IRT
12	01	90	90	00	Other Other Plasma Proteins	
12	02				Allergy	
12	02	01			Allergy	
12	02	01	02	00	Immunoglobulin E - Total	IgE Total
12	02	01	03	00	Immunoglobulin E - Specific, monotest/monoresult	slgE (specific)
12	02	01	04	00	Immunoglobulin E - monotest/monoresult - multi Ag	slgE Mix
12	02	01	05	00	Immunoglobulin E - monotest/pluriresult-multi Ag	slgE Mix
12	02	01	06	00	Immunoglobulin E - Screen	slgE
12	02	01	07	00	Leukotriene Stimulation test	
12	02	01	08	00	Allergene specific IgA	
12	02	01	09	00	Allergene specific IgG	
12	02	01	90	00	Other Allergy Tests	

12	03				Tumour Markers	
12	03	01			Cancer Antigens	
12	03	01	01	00	Bladder Tissue Antigen	BTA
12	03	01	02	00	Cancer Antigen 15-3	CA 15-3
12	03	01	03	00	Cancer Antigen 19-9	CA 19-9
12	03	01	04	00	Cancer Antigen 50	CA 50
12	03	01	05	00	Cancer Antigen 72-4	CA 72-4
12	03	01	06	00	Cancer Antigen 125	CA 125
12	03	01	07	00	Cancer Antigen 195	CA 195
12	03	01	08	00	Cancer Antigen 242	CA 242
12	03	01	09	00	Cancer Antigen 549	CA 549
12	03	01	10	00	Cancer Antigen 27.29	
12	03	01	20	00	CYFRA 21-1	
12	03	01	31	00	Carcinoembryonic Antigen	CEA
12	03	01	32	00	Total Prostatic Specific Antigen	tPSA
12	03	01	33	00	Free Prostatic Specific Antigen	fPSA
12	03	01	34	01	Complexed Prostatic Specific Antigen	cPSA
12	03	01	35	00	Squamous Cell Carcinoma Antigen	SCC
12	03	01	36	00	Tumor Polypeptide Antigen (TPA - incl. TPS)	TPA
12	03	01	37	00	cr Prostatic Acid Phosphatase (IC) CC =>11.01.01.02	PAP
12	03	01	46	00	Cancer Associated Serum Antigen	CASA
12	03	01	90	00	Other Cancer Antigens	
12	03	02			Receptor Assays	
12	03	02	01	00	Estrogen Receptor Assays	ER
12	03	02	02	00	Progesterone Receptor Assays	PR
12	03	02	90	00	Other Receptor Assays	
12	03	03			Oncoproteins	
12	03	03	01	00	cr HER-2/neu GT=>16 02 01 13 00	HER-2/neu
12	03	03	02	00	p53	p53
12	03	03	90	00	Other Oncoproteins	
12	03	90			Other Tumour Markers	
12	03	90	01	00	Alphafetoprotein	AFP
12	03	90	02	00	Beta2-Microglobulin	β2-M
12	03	90	03	00	Cathepsin-D	
12	03	90	04	00	cr Fecal Occult Blood (IC) CC =>11.70.03.01	FOB
12	03	90	05	00	5 HIAA	
12	03	90	06	00	Human Placenta Like Alkaline Phosphatase	hPLAP
12	03	90	07	00	Laminin	
12	03	90	08	00	Neuron Specific Enolase	NSE
12	03	90	12	00	Thymidine Kinase	TK
12	03	90	13	00	Tissue Associated Protein	TAP
12	03	90	16	00	Matrix-Metalloproteinases	MMP
12	03	90	17	00	Serotonine	
12	03	90	18	00	Protein S-100 B	S-100B
12	03	90	90	00	Other Other Tumour Markers	

12	04				Thyroid Function Hormones	
12	04	01			Thyroid Function Hormones	
12	04	01	01	00	Free Triiodothyronine	FT3
12	04	01	02	00	Free Thyroxine	FT4
12	04	01	03	00	Neonatal Thyroid Stimulating Hormone	n TSH
12	04	01	04	00	Reverse Triiodothyronine	Rev T3
12	04	01	05	00	Triiodothyronine	T3
12	04	01	06	00	T- Uptake	
12	04	01	07	00	Thyroxine	T4
12	04	01	08	00	Thyroglobulin	TG
12	04	01	09	00	Thyroid binding globulin	TBG
12	04	01	11	00	Thyroid Stimulating Hormone	TSH
12	04	01	12	00	Neonatal Thyroxine	n T4
12	04	01	90	00	Other thyroid hormones	
12	05				Fertility / Pregnancy Hormones / Proteins	
12	05	01			Fertility Function Hormones / Proteins	
12	05	01	01	00	Androstenedione	
12	05	01	02	00	Dehydro-epiandrosterone Sulphate (incl. DHEA)	DHEAS/DHEA
12	05	01	03	00	Estradiol	E2
12	05	01	04	00	Follicle Stimulating Hormone	FSH
12	05	01	05	00	Luteinising Hormone	LH
12	05	01	06	00	Progesterone	PRG
12	05	01	07	00	17 OH Progesterone	
12	05	01	08	00	Prolactin	PRL
12	05	01	09	00	Sex Hormone Binding Globulin	SHBG
12	05	01	10	00	Testosterone (with Dehydro and Free Testosterone)	
12	05	01	11	00	Androsterone	
12	05	01	12	00	Androstanediol-Glucuronide	
12	05	01	13	00	Corticoid-binding Globulin	
12	05	01	14	00	11-Desoxycortisol	
12	05	01	15	00	Corticosteron (R/M)	
12	05	01	90	00	Other Fertility Function Hormones	
12	05	02			Pregnancy Testing Hormones / Proteins	
12	05	02	01	00	Alpha2-Pregnancy Associated Glycoprotein	a2-PAG
12	05	02	02	00	Estriol	E3
12	05	02	03	00	Unconjugated (free) Estriol	uE3 (FE3)
12	05	02	04	00	Estrone	
12	05	02	05	00	Human Chorionic Gonadotropin Total	HCG
12	05	02	06	00	β Human Chorionic Gonadotropin (incl. subunit)	β HCG
12	05	02	07	00	Human Placental Lactogen	HPL
12	05	02	08	00	Pregnancy Specific B1 -glycoprotein	B1SP1
12	05	02	09	00	Glycoprotein a Subunit	
12	05	02	10	00	Pregnancy associated Plasma Protein - A (Downs)	PAPP-A
12	05	02	90	00	Other Pregnancy Testing Hormones	

12	06				Individual and Specified Hormones		
12	06	01			Diabetes Assays (Hormones)		
12	06	01	01	00	C-Peptide		
12	06	01	02	00	Glucagon		
12	06	01	03	00	Insulin		
12	06	01	04	00	Insulin Antibodies		
12	06	01	05	00	GAD II Antibodies and other ICA		
12	06	01	06	00	cr Glycosylated/Glycated Haemoglobin	CC=11.02.01.14	
12	06	01	07	00	Thyrosin Phosphatase IA2 Antibodies		
12	06	01	08	00	Proinsulin		
12	06	01	09	00	Islet Cell Ab		
12	06	01	90	00	Other Diabetes tests		
12	06	02			Renal Metabolism Assays		
12	06	02	01	00	Aldosterone		
12	06	02	02	00	Angiotensin I / II		
12	06	02	03	00	cr Angiotensin Converting Enzyme (IC)	CC =>11.01.01.09	
12	06	02	04	00	Cortisol		
12	06	02	05	00	Renine (Plasma Renine Activity)		
12	06	02	90	00	Other Renal metabolism tests		
12	06	03			Bone and Mineral Metabolism Assays		
12	06	03	01	00	cr Bone Alkaline Phosphatase (IC)	CC =>11.01.01.06 iso-AP	BAP
12	06	03	02	00	Calcitonin		
12	06	03	03	00	Collagen Type I C-terminal Propeptide		C I CP
12	06	03	04	00	Collagen Type III C-terminal Propeptide		
12	06	03	05	00	Cross-Linked C-Telopeptides		CTx
12	06	03	06	00	Cross-Linked N-Telopeptides		NTx
12	06	03	07	00	Cyclic Adenosin Monophosphate		cAMP
12	06	03	08	00	Deoxypyridinoline		DPD
12	06	03	09	00	1.25 Dihydroxyvitamin D3		1,25(OH) ₂ -D
12	06	03	10	00	25-Hydroxyvitamin D3		25-OH-D
12	06	03	11	00	Hydroxyproline		
12	06	03	12	00	Osteocalcine		
12	06	03	13	00	Parathyroid Hormone intact		PTH
12	06	03	14	00	Parathyroid Hormone (C-/N-terminal, M-regional)		
12	06	03	15	00	Parathyroid Hormone related Peptide		PTHrP
12	06	03	16	00	Pyridinoline		PYD
12	06	03	17	00	Tartrate-resistant Acid Phosphatase 5b		TRAP
12	06	03	18	00	Procollagen Type I N terminal propeptide		PiNP
12	06	03	90	00	Other Bone Metabolism Tests		

12	06	04			Endocrine Hormones and Peptides	
12	06	04	01	00	Adrenocorticotrophic Hormone	ACTH
12	06	04	02	00	Human Growth Hormone	HGH
12	06	04	03	00	Insulin-like Growth Factor I (Somatomedin C)	IGF I
12	06	04	04	00	Insulin-like Growth Factor II	IGF II
12	06	04	05	00	Insulin-like Growth Factor Binding Protein 1	IGFBP-1
12	06	04	06	00	Insulin-like Growth Factor Binding Protein 3	IGFBP-3
12	06	04	07	00	Vasointestinal Peptide	VIP
12	06	04	08	00	Vasopressin	
12	06	04	90	00	Other Endocrine Hormones (Growth Factors)	
12	06	05			Neuroendocrine Function Assays	
12	06	05	01	00	Bombesin	
12	06	05	02	00	β-Endorphin	
12	06	05	03	00	17-Hydroxy-Ketosterone	17OH
12	06	05	04	00	17-Ketogenic Steroids	17KGS
12	06	05	05	00	17-Ketosteroids	17KS
12	06	05	06	00	α-Melanocyte Stimulating Hormones	
12	06	05	07	00	Neurotensin	
12	06	05	08	00	Somatostatin	
12	06	05	09	00	Substance P	
12	06	05	90	00	Other Neoendocrine Function Assays	
12	06	30			Multiple - Individual and Specified Hormones	
12	06	30	01	00	Adrenalin / Noradrenalin / Dopamin	
12	06	30	90	00	Other Multiple Ind. A. Spec. Hormones	
12	06	90			Other Individual and Specified Hormones	
12	06	90	01	00	Gastrin	
12	06	90	02	00	Gonadotropin-Releasing Hormone	LHRH
12	06	90	06	00	Melatonine	
12	06	90	07	00	Neopterine	
12	06	90	08	00	Oxytocin	
12	06	90	09	00	Pepsinogen	
12	06	90	10	00	Prostaglandin	
12	06	90	11	00	Serotonin-Uptake (Platelets)	
12	06	90	12	00	Elastase (Pancreatic Polypeptide)	
12	06	90	13	00	Adrenalin	
12	06	90	14	00	Noradrenalin	
12	06	90	15	00	Dopamine	
12	06	90	16	00	Procalcitonin	
12	06	90	17	00	Leptin	
12	06	90	18	00	Motilin	
12	06	90	19	00	Cyclic Guanosine Monophosphate	cGMP
12	06	90	90	00	Other Individual and Specified Hormones	

12	07				Anemia Related / Vitamin Tests	
12	07	01			Anemia	
12	07	01	01	00	Erythropoietin	EPO
12	07	01	02	00	Ferritin	
12	07	01	03	00	Folate	
12	07	01	04	00	cr Iron (IC)	CC =>11.02.01.16 Fe
12	07	01	05	00	cr Iron Binding Capacity - Total (IC)	CC =>11.02.01.17 TIBC
12	07	01	06	00	Soluble Transferrin Receptor	
12	07	01	07	00	Reticulocyte Haemoglobin Content	CHr
12	07	01	90	00	Other Anemia	

12	07	02			Vitamins	
12	07	02	01	00	Vitamin B1	
12	07	02	02	00	Vitamin B2	
12	07	02	03	00	Vitamin B6	
12	07	02	04	00	Vitamin B12	
12	07	02	10	00	Intrinsic Factor (blocking Antibody)	IFbAb
12	07	02	90	00	Other Vitamin Tests	

12	07	30			Multiple - Anemia Related / Vitamin Tests	
12	07	30	01	00	Vitamin B 12 / Folate	
12	07	30	90	00	Other Multiple Anemia / Vitamine Tests	

12 08 **Therapeutic Drug Monitoring**

12	08	01			Cardiovascular TDM	
12	08	01	01	00	Digoxin	
12	08	01	02	00	Digitoxin	
12	08	01	03	00	Disopyramide	
12	08	01	04	00	Flecainide	
12	08	01	05	00	Lidocaine	
12	08	01	06	00	N-Acetylprocainamide	NAPA
12	08	01	07	00	Procainamide	
12	08	01	08	00	Propranolol	
12	08	01	09	00	Quinidine	
12	08	01	90	00	Other Cardiovascular TDM	

12	08	02			Central Nervous Systems TDM	
12	08	02	01	00	Carbamazepine	
12	08	02	02	00	Ethosuximide	
12	08	02	03	00	Free Carbamazepine	
12	08	02	04	00	Free Phenytoin	
12	08	02	05	00	Free Primidone	
12	08	02	06	00	Free Valproic Acid	
12	08	02	07	00	Phenobarbital	
12	08	02	08	00	Phenytoin	
12	08	02	09	00	Primidone	
12	08	02	10	00	Valproic Acid	
12	08	02	90	00	Other Central Nervous System TDM	

12	08	03			Antibiotic TDM
12	08	03	01	00	Amikacin
12	08	03	02	00	Chloramphenicol
12	08	03	03	00	Dibekacin
12	08	03	04	00	Gentamicin
12	08	03	05	00	Kanamycin
12	08	03	06	00	Netilmycin
12	08	03	07	00	Sisomycin
12	08	03	08	00	Streptomycin
12	08	03	09	00	Tobramycin
12	08	03	10	00	Vancomycin
12	08	03	11	00	Teicoplanine
12	08	03	90	00	Other Antibiotics TDM
12	08	04			Anti-Asthma TDM
12	08	04	01	00	Caffeine
12	08	04	02	00	Theophylline
12	08	04	90	00	Other Anti-asthma TDM
12	08	05			Anti-Neoplastic TDM
12	08	05	01	00	Methotrexate
12	08	05	90	00	Other Anti-neoplastic TDM
12	08	06			Immunosuppressant TDM
12	08	06	01	00	Cyclosporine Total
12	08	06	02	00	Cyclosporine Specific
12	08	06	03	00	Tacrolimus
12	08	06	04	00	Rapamycin (Sirolimus)
12	08	06	05	00	Mycophenolate
12	08	06	90	00	Other Immunosuppressant TDM

12	09				Drugs of Abuse / Toxicology	
12	09	01			Drugs of Abuse	
12	09	01	01	00	Amphetamines Group	
12	09	01	02	00	Amphetamine/Methamphetamine Specific (+Ecstasy)	
12	09	01	03	00	Barbiturates	
12	09	01	04	00	Benzodiazepines	
12	09	01	05	00	Cannabinoids	THC
12	09	01	06	00	Cocaine + Cocaine Metabolites	
12	09	01	07	00	Codeine	
12	09	01	08	00	Cotinine	
12	09	01	09	00	Lysergic acid diethylamide	LSD
12	09	01	10	00	Methadone	
12	09	01	11	00	Methaqualone	
12	09	01	12	00	Morphines	
12	09	01	13	00	Opiates	
12	09	01	14	00	Phencyclidine	PCP
12	09	01	15	00	Propoxyphene	
12	09	01	16	00	6-Acetylmorphium	
12	09	01	90	00	Other drugs of abuse	
12	09	02			Toxicology	
12	09	02	01	00	Acetaminophene (Paracetamol)	
12	09	02	02	00	5-Aminolevulinic Dehydratase	
12	09	02	03	00	Amitriptyline	
12	09	02	04	00	Catecholamines	
12	09	02	05	00	Desipramine	
12	09	02	06	00	Doxepin plus metabolites	
12	09	02	07	00	Ethanol (Alcohol)	
12	09	02	08	00	Hippuric Acid	
12	09	02	09	00	Imipramine	
12	09	02	10	00	Nortriptyline	
12	09	02	11	00	Phenols	
12	09	02	12	00	Protoporphyrin IX	
12	09	02	13	00	Salicylate	
12	09	02	14	00	Trichloroacetic Acid	
12	09	02	15	00	Tricyclic Antidepressants (Total)	TAD
12	09	02	16	00	Uro/Coproporphyrins	
12	09	02	17	00	Vanillylmandelic Acid	VMA
12	09	02	18	00	Homovanillic Acid	HVA
12	09	02	19	00	Tox adulteration	
12	09	02	90	00	Other Toxicology	

12	10				Auto-Immune Diseases Markers	
12	10	01			Autoimmune Connective Tissue Disease	
12	10	01	01	00	ANA Screening	ANA
12	10	01	02	00	ENA Screening	ENA
12	10	01	03	00	Anti cytoplasmic - Antibodies	
12	10	01	04	00	CENP - Antibodies	
12	10	01	05	00	ds DNA - Antibodies	
12	10	01	06	00	ss DNA - Antibodies	
12	10	01	07	00	Histones (H1,H2a,H3,H4,...Hn)	
12	10	01	08	00	Jo-1	
12	10	01	09	00	PM-Scl - Antibodies	
12	10	01	10	00	Scl-70	
12	10	01	11	00	Sm	
12	10	01	12	00	SS-A	
12	10	01	13	00	SS-B	
12	10	01	14	00	U1-snRNP - Antibodies	
12	10	01	15	00	Anti-centromere Antibodies	
12	10	01	16	00	Systemic Lupus Erythematosus	SLE
12	10	01	90	00	Other ANA / ENA	
12	10	02			Neuro-Auto-Immune Disease	
12	10	02	01	00	Anti-Ganglioside-Antibodies Total	
12	10	02	02	00	Anti-GM1	
12	10	02	03	00	Asialo-GM1	
12	10	02	04	00	Anti-GD1b	
12	10	02	05	00	Gal(β1-3)	
12	10	02	06	00	GalNAc	
12	10	02	07	00	Anti-MAG (Myelin Associated Glycoprotein)	
12	10	02	08	00	Anti-CAR (Cancer Associated Retinopathy)	
12	10	02	09	00	Anti-Hu Antibody	
12	10	02	10	00	Anti-Yo Antibody	
12	10	02	11	00	Anti-Ri Antibody	
12	10	02	12	00	Anti-GQ1b	
12	10	02	90	00	Other Neuro-Auto-Immunology	
12	10	03			Thyroid-Auto-Immune Disease	
12	10	03	01	00	Thyroid Peroxidase (incl. Microsomal) Antibodies	Anti-TPO
12	10	03	03	00	TSH Receptor Antibodies	
12	10	03	04	00	Thyroglobulin Autoantibodies	Anti-TG
12	10	03	90	00	Other Thyroid-Auto-Immune Disease Tests	

12	10	90			Other Auto-Immune Disease	
12	10	90	01	00	Anti-Cardiolipin Antibodies	ACA
12	10	90	02	00	Anti-Mitochondrial Antibodies	AMA
12	10	90	03	00	Anti-Phosphatidylserin Antibodies	
12	10	90	04	00	Anti-β2-Glycoprotein I Antibodies	
12	10	90	05	00	Complement Activation	CAE
12	10	90	06	00	Gliadin Antibodies	
12	10	90	07	00	Goodpasture Antibodies	
12	10	90	08	00	LKM1 and Related Proteins Antibodies	
12	10	90	09	00	MPO ANCA	
12	10	90	10	00	PR3 ANCA	
12	10	90	11	00	Parietal Cell Antibodies	
12	10	90	12	00	Sp 100 Antibodies	
12	10	90	13	00	Sperm Antibodies	
12	10	90	15	00	Antibodies to Glomerular Basal Membrane	
12	10	90	16	00	Antibodies to endomysial Autoantigenes	
12	10	90	17	00	Antibodies to soluble Liverantigenes	
12	10	90	18	00	Nucleosome Antibodies	
12	10	90	19	00	Saccharomyces cerevisiae Antibodies	
12	10	90	20	00	Ribosomal Phosphoprotein Antibodies	
12	10	90	21	00	Tissue Transglutaminase Antibodies	
12	10	90	22	00	Tissue Transglutaminase/ Gliadin Antibodies CombiteSt	
12	10	90	23	00	Acetylcholin Receptor Antibodies	ARA
12	10	90	24	00	LDL Antibodies	
12	10	90	90	00	Other Other Auto-Immune Disease Tests	
12	11				Rheumatoid - Inflammatory Diseases Markers	
12	11	01			Rheumatoid - Inflammatory Diseases Markers	
12	11	01	01	00	Anti-Streptococcal D Nase B	ADNase
12	11	01	02	00	Anti-Streptococcal Hyaluronidase	
12	11	01	03	00	Anti-Streptokinase (ASK)	ASK
12	11	01	04	00	Anti-Streptolysin (quantitative)	
12	11	01	05	00	Anti-Streptolysin/Anti-Streptolysin O (qualitative)	ASL/ASO
12	11	01	06	00	Anti-Staphylolysin (qualitative)	
12	11	01	07	00	Anti-Staphylolysin (qualitative)	AStal
12	11	01	08	00	Circulating Immune Complexes	CIC
12	11	01	09	00	cr C-Reactive Protein IC=> 12 70 11 01	CRP
12	11	01	10	00	Rheumatoid Factors	RF
12	11	01	21	00	A-Streptococcal Screening	
12	11	01	90	00	Other Rheumatoid Factors	

12	12				Specific Organ Function Assays		
12	12	01			Liver Function (Immunochemistry)		
12	12	01	01	00	MEGX		
12	12	01	02	00	Carbo Hydrate Deficient Transferrin		CDT
12	12	01	90	00	Other Liver Function		
12	12	90			Other Organ Function Assays		
12	12	90	90	00	Other Organ Function Assays		
12	13				Cardiac Markers		
12	13	01			Cardiac Markers		
12	13	01	01	00	Atrial- Brain Natriuric Peptide (incl. Pro-ANP/BNP)		
12	13	01	02	00	cr Creatine Kinase - MB "Mass" (IC) CC =>11.01.01.14.00		CK-MB
12	13	01	03	00	Fatty Acid Binding Protein		
12	13	01	04	00	Glycogen Phosphorylase BB		
12	13	01	05	00	Myoglobin		MYO
12	13	01	06	00	Myosin Light Chain		
12	13	01	07	00	Troponin (T + I)		cTnT,cTnI
12	13	01	09	00	Homocysteine		
12	13	01	90	00	Other Cardiac Proteins		
12	30				Multiple Parameters - Immunochemistry		
12	30	01			Multiple - Immunochemistry Reagents		
12	30	01	90	00	Other Multiple Immunochemistry Reagents		
12	50				Controls/Standards/Calibrators Immunochemistry		
12	50	01			Controls/Standards/Calibrators Immunochemistry		
12	50	01	01	00	TDM/Drug Standards / Calibrators		
12	50	01	02	00	TDM/Drug Controls		
12	50	01	03	00	Hormone Standards / Calibrators		
12	50	01	04	00	Hormone Controls		
12	50	01	05	00	Specific Protein Standards / Calibrators		
12	50	01	06	00	Specific Protein Controls		
12	50	01	07	00	Cardiac Marker Standards / Calibrators		
12	50	01	08	00	Cardiac Marker Controls		
12	50	01	09	00	Tumour Marker Standards / Calibrators		
12	50	01	10	00	Tumour Marker Controls		
12	50	01	11	00	Anaemia Related/Vitamin Standards and Calibrators		
12	50	01	12	00	Anaemia Related/Vitamin Controls		
12	50	01	13	00	Rheumatoid/Autoimmune Standards / Calibrators		
12	50	01	14	00	Rheumatoid/Autoimmune Controls		
12	50	01	15	00	Individual and Specified Hormones Calibrators		
12	50	01	16	00	Individual and Specified Hormones Controls		
12	50	01	30	00	Multi Constituents Immunochemistry Controls		
12	50	01	80	00	Other Standards / Calibrators Immunochemistry		
12	50	01	90	00	Other Controls Immunochemistry		

12	70				Rapid Tests - Immunochemistry	
12	70	13			Cardiac Markers Rapid Tests	
12	70	13	01	00	CK - MB / Myoglobin - Rapid Test	
12	70	13	02	00	Myoglobin - Rapid Test	MYO
12	70	13	03	00	Troponin I/T - Rapid Test	cTnT,cTnl
12	70	13	04	00	Brain Natriuric Peptide - Rapid Test	
12	70	13	90	00	Other Cardiac Marker Rapid Tests	
12	70	03			Tumour Markers Rapid Tests	
12	70	03	01	00	BTA - Rapid Test	BTA
12	70	03	11	00	PSA - Rapid Test	PSA
12	70	03	90	00	Other Tumour Marker Rapid Tests	
12	70	05			Fertility / Pregnancy Rapid Tests	
12	70	05	01	00	FSH - Rapid Test	FSH
12	70	05	02	00	HCG - Rapid Test	HCG
12	70	05	03	00	HPL - Rapid Test	HPL
12	70	05	04	00	LH - Rapid Test	LH
12	70	05	90	00	Other Fertility/Pregnancy Rapid Tests	
12	70	01			Specific Proteins Rapid Tests	
12	70	01	01	00	cr Albumin incl. uAlbumin Rapid Test IC => 12 01 03 01	
12	70	01	90	00	Other Specific Proteins Rapid Tests	
12	70	08			TDM Rapid Tests	
12	70	08	11	00	Theophylline - Rapid Test	
12	70	08	90	00	Other TDM Rapid Tests	
12	70	09			Drugs of Abuse/Toxicology Rapid Tests	
12	70	09	01	00	Amphetamines Group - Rapid Test	
12	09	01	02	00	Amphetamine/Methamphetamine Specific (+Ecstasy) - Rapid Test	
12	70	09	03	00	Barbiturates - Rapid Test	
12	70	09	04	00	Benzodiazepines - Rapid Test	
12	70	09	05	00	Cannabinoids - Rapid Test	THC
12	70	09	06	00	Cocaine + Cocaine Metabolites - Rapid Test	
12	70	09	07	00	Methadone - Rapid Test	
12	70	09	08	00	Opiates - Rapid Test	
12	70	09	09	00	Phencyclidine - Rapid Test	PCP
12	70	09	10	00	Tricyclic Antidepressants - Rapid Test	TAD
12	70	09	70	00	Multiple Drugs of Abuse/Toxicology Rapid Tests	
12	70	09	90	00	Other Drugs of Abuse/Toxicology Rapid Tests	
12	70	11			Rheumatoid - Inflammatory Rapid Tests	
12	70	11	01	00	C-Reactive Protein - Rapid Test	CRP
12	70	11	90	00	Other Rheumatoid - Inflammatory Rapid Tests	
12	90				Other Immunochemistry	
12	90	01			Other Immunochemistry Reagents	
12	90	01	01	00	Antisera (monovalent and polyvalent)	
12	90	01	02	00	Amanitin (Organic poisons)	
12	90	01	70	00	Buffers (unassignable), Supplem. Reagents, etc (IC)	
12	90	01	80	00	Coated Tubes and Beads (unassignable) (IC)	
12	90	90			Other, Other Immunochemistry Reagents	
12	90	90	90	00	Other, Other Immunochemistry Reagents	

13					Haematology / Histology / Cytology
13	01				Haematology Reagents
13	01	01			Reagents for (Automated) Haematology Analyzer
13	01	01	01	00	CBC-Reagents (Cleaning-/Diluting-/Lysing-/Sheat-fluids)
13	01	01	10	00	Specific Reticulocyte reagents
13	01	01	90	00	Other Reagents for Haematology Analyzer
13	01	02			Haemoglobin (Types) Testing
13	01	02	01	00	Haemoglobin determinations (Total Hb)
13	01	02	02	00	Haemoglobin subtypes HbA2,HbC,HbF,HbS,etc.(excl. HbA1)
13	01	02	90	00	Other Haemoglobin Testing
13	01	03			Cellular Stains for Microscopy
13	01	03	01	00	Histo/Cyto stains
13	01	03	02	00	Romanowsky stains
13	01	03	90	00	Other Haematology stains
13	01	09			Other Haematology Testing Reagents
13	01	09	01	00	Cellular enzyme determination reagents (G-6-PDH, Pyuvate Kinase)
13	01	09	02	00	Glandula fever
13	01	09	11	00	Erythrocyte Sedimentation Rate Test ESR
13	01	09	90	00	Other Other Haematology Testing Reagents
13	01	20			Haematology Controls and Calibrators
13	01	20	01	00	Control Blood Normal
13	01	20	02	00	Control Blood Abnormal
13	01	20	03	00	Control Blood Multilevel
13	01	20	04	00	Haemoglobin Control
13	01	20	05	00	Platelet Control
13	01	20	06	00	Reticulocyte Control
13	01	20	07	00	Whole Blood Calibrators
13	01	20	90	00	Other Haematology Controls
13	01	70			Rapid Haematology Tests (Point-Of-Care/Near Patient)
13	01	70	01	00	Haemoglobin (Hb)
13	01	70	02	00	Erythrocytes (Ery)
13	01	70	03	00	Haematocrit (HCT)
13	01	70	90	00	Other Rapid Haematology Tests
13	01	90			Other Haematology Reagents
13	01	90	90	00	Other Other Haematology Reagents

13	02				Haemostasis Reagents (Coagulation)	
13	02	01			General Coagulation Tests	
13	02	01	01	00	Prothrombin time (Quick Test)	PT
13	02	01	02	00	Activated Partial Thromboplastin Time	APTT
13	02	01	03	00	Thrombin Time / Reptilase / Batroxobin Time	TT
13	02	01	04	00	Activated Clotting Time	ACT
13	02	01	90	00	Other Global Coagulation Tests	
13	02	02			Coagulation Factors	
13	02	02	01	00	Fibrinogen Assays (Factor I)	FBG
13	02	02	02	00	Coagulation factor II (Prothrombin)	F II
13	02	02	03	00	Coagulation factor II a (Thrombin)	F IIa
13	02	02	04	00	Coagulation factor V	F V
13	02	02	05	00	Coagulation factor VII	F VII
13	02	02	06	00	Coagulation factor VII a	F VIIa
13	02	02	07	00	Coagulation factor VIII	F VIII
13	02	02	08	00	Coagulation factor IX	F IX
13	02	02	09	00	Coagulation factor X	F X
13	02	02	11	00	Coagulation factor XI	F XI
13	02	02	12	00	Coagulation factor XII	F XII
13	02	02	13	00	Coagulation factor XII a	F XIIa
13	02	02	14	00	Coagulation factor XIII	F XIII
13	02	02	17	00	Coagulation factor HMW-Kininogen (Fitzgerald)	
13	02	02	18	00	Coagulation factor von Willebrand Antigen	VWF
13	02	02	19	00	Prekallikrein / Kallikrein (Fletcher factor)	
13	02	02	21	00	Coagulation factor von Willebrand RCO	
13	02	02	22	00	Coagulation factor von Willebrand CBA	
13	02	02	90	00	Other Coagulation Factors	
13	02	03			Special Coagulation Tests	
13	02	03	03	00	Fibrin sensitivity monomer	FM
13	02	03	04	00	Fibrinopeptide A	
13	02	03	05	00	Heparin	
13	02	03	06	00	Hirudin Test	
13	02	03	07	00	Plasmin - a2 - Antiplasmin Complex	PAP
13	02	03	08	00	Prothrombin Fragment 1 + 2	F 1+2
13	02	03	09	00	Thrombin-Antithrombin III-Complex	TAT
13	02	03	90	00	Other Special Coagulation Tests	

13	02	04			Platelet Factors	
13	02	04	01	00	Aggregation Factors	
13	02	04	02	00	Platelet Factor 4	PF4
13	02	04	03	00	Prostacyclin	
13	02	04	04	00	Thromboxane	
13	02	04	05	00	β-Thromboglobulin	BTG
13	02	04	90	00	Other Primary Hemostasis	
13	02	05			Fibrinolysis	
13	02	05	01	00	α2-Antiplasmin	α2AP
13	02	05	02	00	Fibrinogen Degradation Products	FDP
13	02	05	03	00	D-Dimer	
13	02	05	04	00	Plasmin	
13	02	05	05	00	Plasminogen	PLG
13	02	05	06	00	Plasminogen Activator-Inhibitors	PAI
13	02	05	07	00	Tissue Plasminogen Activator	tPA
13	02	05	08	00	Urokinase Plasminogen Activator	UPA
13	02	05	09	00	Thrombin Activating Fibrinolysis Inhibitor	TAFI
13	02	05	90	00	Other Fibrinolysis Tests	
13	02	06			Coagulation Inhibitors/Thrombophilia Markers	
13	02	06	01	00	Antiphospholipid Antibodies	
13	02	06	02	00	Antithrombin III	AT III
13	02	06	04	00	Coagulation factor VIII Inhibitor	
13	02	06	05	00	Coagulation factor IX Inhibitor	
13	02	06	06	00	Coagulation factor X Inhibitor	
13	02	06	07	00	Lupus Anticoagulant Markers	LA
13	02	06	08	00	Protein C	PC
13	02	06	09	00	Protein S	PS
13	02	06	10	00	Heparin Cofactor II - Tissue Factor Pathway Inhibitor	
13	02	06	11	00	APC Resistance	
13	02	06	12	00	Pro C Global	
13	02	06	90	00	Other Coagulation Inhibitors	
13	02	50			Haemostasis Controls	
13	02	50	01	00	Calibration Plasmas	
13	02	50	02	00	Control Plasmas	
13	02	50	90	00	Other Haemostasis Controls	
13	02	70			Haemostasis Rapid Tests (Home Monitoring)	
13	02	70	01	00	Prothrombin Time Rapid Test	
13	02	70	02	00	Activated Partial Thromboplastin Time Rapid Test	
13	02	70	03	00	D-Dimer - Rapid Test	
13	02	70	04	00	Activated Clotting Time Rapid Test	ACT
13	02	70	90	00	Other Haemostasis Rapid Tests	
13	02	80			Auxiliary Reagents and Supplements (Haemostasis)	
13	02	80	01	00	Calcium Chloride	
13	02	80	02	00	Citrate	
13	02	80	03	00	Buffers (Haemostasis)	
13	02	80	80	00	Coated tubes (Citrate, Heparin etc.)	
13	02	80	90	00	Other Auxiliary Reagents (Haemostasis)	
13	02	90			Other Haemostasis Reagents	
13	02	90	90	00	Other Haemostasis Reagents	

13	03				Immunohaematology ("Blood Grouping")
13	03	01			ABO Typing
13	03	01	01	00	ABO grouping cells
13	03	01	02	00	ABO sera
13	03	01	90	00	Other ABO Typing Tests
13	03	02			Rhesus Typing
13	03	02	01	00	Rhesus D
13	03	02	02	00	Rhesus Phenotypes
13	03	02	90	00	Other Rhesus Typing Assays
13	03	03			Other Antigen Typing
13	03	03	90	00	Other Antigen typing reagents
13	03	04			Antibody detection (Immunohaematology)
13	03	04	01	00	Antibody 2 cell screening
13	03	04	02	00	Antibody 3 cell screening
13	03	04	03	00	Antibody identification cell panels
13	03	04	04	00	Polyspecific antihuman serum
13	03	04	05	00	Monospecific antihuman serum
13	03	04	06	00	Enhancement Media (e.g. Bovine Albumin,LISS,PEG)
13	03	04	07	00	Enzymes (e.g. Bromelin / Papain, etc.)
13	03	04	90	00	Other Antibody Detection (Immunohaematology)
13	03	20			Immunohaematology Controls
13	03	20	01	00	Coombs Control Cells
13	03	20	02	00	Control Kits (Immunohaematology)
13	03	20	90	00	Other immunohaematology Controls
13	03	90			Other Immunohaematology Tests
13	03	90	90	00	Other Other Immunohaematology Tests
13	04				Tissue Typing Reagents
13	04	01			Tissue Typing Reagents
13	04	01	01	00	Complement for HLA testing
13	04	01	02	00	HLA Antibody screening
13	04	01	03	00	HLA Antigen typing
13	04	01	04	00	HLA Control Cells
13	04	01	06	00	Lymphocyte separation media
13	04	01	07	00	Lymphocyte stabilizing media
13	04	01	90	00	Other Tissue Typing Reagents

13	05				Monoclonal Antibodies for Cell Surface Antigens	
13	05	01			Monoclonal Antibodies for Cell Surface Antigens	
13	05	01	01	00	Antibodies for B and T-cell subtyping	
13	05	01	02	00	Antibodies for HLA class II determinants	
13	05	01	03	00	Antibodies for lymphoma typing(except B-&T-cell typing)	
13	05	01	04	00	Antibodies for recognizing cell surface receptors	
13	05	01	05	00	Antibodies for subtyping of leukemia(except B-&T-cell typing)	
13	05	01	06	00	Antibodies for Lymphocyte subtyping	
13	05	01	90	00	Other Monoclonal Antibodies	
13	06				Cytokines (Lymphokines) / Immunomodulators	
13	06	01			Cytokines (Lymphokines) / Immunomodulators	
13	06	01	01	00	Interferons (a,b,y)	
13	06	01	03	00	Soluble Antigens / Receptors	
13	06	01	04	00	Tumour Necrosis Factors (TNFa,TNFb)	TNF
13	06	01	05	00	Tumour Necrosis Factors Receptors (TNF-R1,TNF-R2)	TNF-R
13	06	01	06	00	Colony Stimulating Factors (G-CSF,M-CSF,GM-CSF)	CSF
13	06	01	11	00	Interleukins (IL-1,IL-1A,IL-1B,.. - IL-15)	IL
13	06	01	12	00	Interleukins Receptors(IL-2R,IL6R ...)	IL-R
13	06	01	90	00	Other Lymphokines /Immunomodulators	
13	07				Histology/Cytology Reagents	
13	07	01			Histology/Cytology Reagents	
13	07	01	01	00	Chromosome Culture Kits / reagents	
13	07	01	02	00	Cytochemical staining reagents	
13	07	01	03	00	DNA in situ Hybridisation reagents	
13	07	01	04	00	Embedding media (Histology/Cytology)	
13	07	01	05	00	Fixing reagents (Histology/Cytology)	
13	07	01	06	00	Mounting media (Histology/Cytology)	
13	07	01	07	00	Stain powders (Histology/Cytology)	
13	07	01	08	00	Stain solutions (Histology/Cytology)	
13	07	01	09	00	Primary antisera for immunohistology	
13	07	01	10	00	Secondary antisera for immunohistology	
13	07	01	11	00	Immunohistology kits	
13	07	01	90	00	Other Histology / Cytology reagents	
13	90				Other Haematology	
13	90	01			Other Haematology	
13	90	90	90	00	Other Haematology	

14					Microbiology (Culture)
14	01				Bacteriology - Culture
14	01	01			Dehydrated Culture Media (Bacteriology)
14	01	01	01	00	DCM (except susceptibility testing)
14	01	01	02	00	DCM (susceptibility testing)
14	01	01	03	00	Raw materials for preparing DCM
14	01	01	04	00	Additives for DCM
14	01	01	90	00	Other DCM
14	01	02			Prepared Media in Tubes (Bacteriology)
14	01	02	01	00	Broth Media (Tubes)
14	01	02	10	00	Mycobacteria Isolation Media (Tubes)
14	01	02	20	00	Transport Media (Tubes)
14	01	02	21	00	Sample transport for NA Testing
14	01	02	30	00	Dip Slides (Bacteriology)
14	01	02	90	00	Other Media in Tubes
14	01	03			Prepared Media in Bottles (Bacteriology)
14	01	03	01	00	Agar Media for Pouring (Bottles)
14	01	03	02	00	Broth Media (Bottles)
14	01	03	03	00	Susceptibility Testing (Bottles)
14	01	03	04	00	Enrichment media (Bottles)
14	01	03	10	00	Mycobacteria media (Bottles)
14	01	03	90	00	Other Media in Bottles
14	01	04			Prepared Media in Plates (Bacteriology)
14	01	04	01	00	Isolation Media (Plates)
14	01	04	02	00	Substrate Incorporated ID Media (Plates)
14	01	04	03	00	Susceptibility Test Media (Plates)
14	01	04	90	00	Other Prepared Media in Plates
14	01	05			Blood Culture - Manual
14	01	05	01	00	Broth only (Blood Culture - Manual)
14	01	05	02	00	Diphasic (Blood Culture - Manual)
14	01	05	03	00	Paediatric (Blood Culture - Manual)
14	01	05	90	00	Other Manual Blood Culture (Concentrators, Antibiotic Inactivators etc.)
14	01	06			Blood Culture / Mycobacteria Culture - Automated
14	01	06	01	00	Adult Bottles (Blood Culture -Autom.)
14	01	06	02	00	Paediatric Bottles (Blood Culture -Autom.)
14	01	06	10	00	Systems for Mycobacteria - Automated
14	01	06	90	00	Other Automated Blood Culture

14	01	07			Urine Screening (Bacteriology)
14	01	07	01	00	Urine Screening Systems - Automated
14	01	07	02	00	Urine Screening Manual (Strips etc.)
14	01	07	90	00	Other Urine Screening (Bacteriology)
14	01	08			Stains, Buffers etc (Bacteriology)
14	01	08	01	00	Gram's Stain
14	01	08	02	00	Other Stains
14	01	08	03	00	Gas Generating Kits
14	01	08	90	00	Miscellaneous Buffers, Controls and Standards
14	02				Bacteriology - Identification & Susceptibility Testing
14	02	01			Biochemical Identification - Automated
14	02	01	01	00	Enterobacteriaceae - Automated
14	02	01	02	00	Non-fermenters - Automated
14	02	01	03	00	Streptococci - Automated
14	02	01	04	00	Staphylococci - Automated
14	02	01	05	00	Anaerobes - Automated
14	02	01	06	00	Haemophilus & Neisseria - Automated
14	02	01	90	00	Other Automated Identification
14	02	02			Biochemical Identification - Manual
14	02	02	01	00	Enterobacteriaceae - Manual
14	02	02	02	00	Non-fermenters - Manual
14	02	02	03	00	Streptococci - Manual
14	02	02	04	00	Staphylococci - Manual
14	02	02	05	00	Anaerobes - Manual
14	02	02	06	00	Haemophilus & Neisseria - Manual
14	02	02	07	00	Mycoplasma - Manual
14	02	02	08	00	Rapid Single Tests (Catalase, Oxidase etc.)
14	02	02	90	00	Other Manual Identification (Optichin, Bacitracin etc.)
14	02	03			Immunological Identification
14	02	03	01	00	Serotyping (E.coli, Salmonella, Shigella, etc.)
14	02	03	02	00	Streptococci
14	02	03	03	00	Staphylococci
14	02	03	04	00	Meningitis Causative Agents
14	02	03	90	00	Other Immunological Identification
14	02	04			Susceptibility Testing - Automated
14	02	04	01	00	Break-point Systems (Automated)
14	02	04	02	00	MIC Systems - Automated
14	02	04	03	00	Combined Susceptibility & Identification Systems (Auto)
14	02	04	04	00	Systems for Mycoplasma (inc. combined with I.D.)
14	02	04	90	00	Other Automated Susceptibility Systems

14	02	05			Susceptibility Testing - Manual
14	02	05	01	00	MIC Systems - Manual
14	02	05	02	00	Impregnated Disks, Multi-disks & Tablets
14	02	05	03	00	Multipoint Systems
14	02	05	04	00	Mycobacteria Susceptibility Testing
14	02	05	05	00	Rapid Single Tests (Cefinase etc.)
14	02	05	90	00	Other Manual Susceptibility Testing
14	02	06			Nucleic Acid Identification (Bacteriology)
14	02	06	01		Nucleic Acid Identification - manual
14	02	06	02		Nucleic Acid Identification - automated
14	03				Mycology
14	03	01			Dehydrated Culture Media (Mycology)
14	03	01	01	00	DCM for Yeasts and Fungi
14	03	01	90	00	Other DCM (Mycology)
14	03	02			Prepared Media in Plates (Mycology)
14	03	02	01	00	PPM for Yeasts and Fungi
14	03	02	02	00	Substrate Incorporated Media for Yeasts and Fungi
14	03	02	90	00	Other Prepared Media in Plates (Mycology)
14	03	03			Tubes and Bottled Media for Yeasts and Fungi
14	03	03	01	00	Tubes and Bottled Media for Yeasts and Fungi
14	03	03	02	00	Dip Slides (Mycology)
14	03	03	90	00	Other Tubes Media for yeasts and Fungi
14	03	04			Identification (Mycology)
14	03	04	01	00	Identification Systems for Yeasts - Manual
14	03	04	02	00	Identification Systems for Fungi - Manual
14	03	04	03	00	Identification Systems for Yeasts and Fungi - Automated
14	03	04	04	00	Identification Systems for Yeasts and Fungi / NA
14	03	04	90	00	Other Identification Systems for Yeasts and Fungi - Automated
14	03	05			Serological Identification (Mycology)
14	03	05	01	00	Serological Identification of Yeasts and Fungi
14	03	05	90	00	Other Serological Identification of Yeasts and Fungi
14	03	06			Susceptibility Testing (Mycology)
14	03	06	01	00	Susceptibility Testing Systems for Yeasts and Fungi
14	03	06	90	00	Other Susceptibility Systems for yeasts and Fungi
14	04				Viral Culture
14	04	01			Tissue Culture
14	04	01	01	00	Cells for Tissue Culture
14	04	01	02	00	Media for Tissue Culture
14	04	01	03	00	Serum for Tissue Culture
14	04	01	04	00	Other Tissue Culture Additives and Solutions
14	04	01	90	00	Other Virology (Microbiology) Reagents

14	05				Parasitology (Microbiology)
14	05	01			Extraction Reagents
14	05	01	01	00	Parasitology Extraction Reagents
14	05	01	02	00	Parasitology Stains
14	05	01	90	00	Other Parasitology Stains
14	05	02			Serological Detection and Identification (Parasitology)
14	05	02	01	00	Pneumocystis carinii
14	05	02	02	00	Plasmodium falciparum
14	05	02	03	00	Cryptosporidium
14	05	02	90	00	Other Parasite Antigen Detection
14	50				Controls/Standards/Calibrators - Microbiology
14	50	01			Controls/Standards/Calibrators - Microbiology
14	50	01	90	00	Other Controls Microbiology
14	70				Rapid Tests - Microbiology
14	70	01			Rapid Tests - Microbiology
14	70	01	90	00	Other Microbiology Rapid Tests
14	90				Other Microbiology
14	90	90	90	00	Other Other Microbiology Tests

15					Infectious Immunology
15	01				Bacteriology (Infect. Immunology)
15	01	01			Chlamydia
15	01	01	01	00	Chlamydia Antigen Detection
15	01	01	03	00	Chlamydia Antibody Assays Total
15	01	01	04	00	Chlamydia Antibody IgA
15	01	01	05	00	Chlamydia Antibody IgG
15	01	01	06	00	Chlamydia Antibody IgM
15	01	01	40	00	Chlamydia Detection by NA Reagents
15	01	01	90	00	Other Chlamydia Reagents
15	01	02			Gonococci
15	01	02	01	00	Gonococcal Antigen Detection
15	01	02	03	00	Gonococcal Antibody Assays Total
15	01	02	40	00	Gonococci detection by NA Reagents
15	01	02	90	00	Other Gonococci Reagents
15	01	03			Syphilis (Treponema pallidum)
15	01	03	01	00	Syphilis Antigen Detection
15	01	03	03	00	Syphilis Antibody Assays Total
15	01	03	05	00	Syphilis Antibody IgG
15	01	03	06	00	Syphilis Antibody IgM
15	01	03	40	00	Syphilis detection by NA Reagents
15	01	03	90	00	Other Syphilis Reagents
15	01	04			Helicobacter Pylori
15	01	04	01	00	H. Pylori Antigen Detection
15	01	04	03	00	H. Pylori Antibody Assays
15	01	04	40	00	H. Pylori Detection by NA Reagents
15	01	04	90	00	Other H. Pylori Reagents
15	01	05			Legionella
15	01	05	01	00	Legionella Antigen Detection
15	01	05	03	00	Legionella Antibody Assays
15	01	05	40	00	Legionella Detection by NA Reagents
15	01	05	90	00	Other Legionella Reagents

15	01	06			Lyme Borreliosis
15	01	06	01	00	Lyme Antigen Detection
15	01	06	03	00	Lyme Antibody Total
15	01	06	05	00	Lyme Antibody IgG
15	01	06	06	00	Lyme Antibody IgM
15	01	06	40	00	Lyme Detection by NA Reagents
15	01	06	90	00	Other Lyme Borelliosis Reagents
15	01	07			Mycobacteria genus + species
15	01	07	01	00	Mycobacterial Antigen Detection
15	01	07	03	00	Mycobacterial Antibody Assays
15	01	07	40	00	Mycobacterial Detection by NA Reagents
15	01	07	90	00	Other Mycobacteria Reagents
15	01	08			Mycoplasma
15	01	08	01	00	Mycoplasma Antigen Detection
15	01	08	03	00	Mycoplasma Antibody Assays
15	01	08	40	00	Mycoplasma Detection by NA Reagents
15	01	08	90	00	Other Mycoplasma Reagents
15	01	09			Pseudomonas Aeruginosa
15	01	09	03	00	Pseudomonas Aeruginosa Antibody IgG
15	01	09	40	00	Pseudomonas Detection by NA Reagents
15	01	09	90	00	Other Pseudomonas Aeruginosa Reagents
15	01	10			Salmonella
15	01	10	01	00	Salmonella Antigen Detection
15	01	10	03	00	Salmonella Antibody Assays
15	01	10	40	00	Salmonella Detection by NA Reagents
15	01	10	90	00	Other Salmonella Reagents
15	01	11			Streptococci
15	01	11	01	00	Streptococcal Direct Antigen Detection
15	01	11	40	00	Streptococci Detection by NA Reagents
15	01	11	90	00	Other Streptococci Reagents
15	01	12			Staphylococci
15	01	12	01	00	Staphylococcal Direct Antigen Detection
15	01	12	11	00	Staphylo toxin
15	01	12	40	00	Staphylococci Detection by NA Reagents
15	01	12	90	00	Other Staphylococci Reagents

15	01	13			Listeria
15	01	13	01	00	Listeria Antigen Detection
15	01	13	03	00	Listeria Antibody Assays
15	01	13	11	00	Listeria Monocytogenes direct Antigen detection
15	01	13	13	00	Listeria Monocytogenes Antibody assays
15	01	13	40	00	Listeria Detection by NA Reagents
15	01	13	90	00	Other Listeria Reagents
15	01	14			Campylobacter
15	01	14	01	00	Campylobacter Direct Antigen Detection
15	01	14	40	00	Campylobacter Detection by NA Reagents
15	01	14	90	00	Other Campylobacter Reagents
15	01	15			Escherichia Coli
15	01	15	01	00	E. Coli Direct Antigen Detection
15	01	15	11	00	E. Coli toxin
15	01	15	40	00	E. Coli Detection by NA Reagents
15	01	15	90	00	Other E. Coli Reagents
15	01	40			Other Bacteriology - NA Reagents
15	01	40	01	00	Brucella - NA Reagents
15	01	40	02	00	Clostridium difficile - NA Reagents
15	01	40	03	00	Coxiella - NA Reagents
15	01	40	04	00	Leptospira - NA Reagents
15	01	40	05	00	Rickettsia - NA Reagents
15	01	40	06	00	Yersinia - NA Reagents
15	01	40	07	00	Bordetella pertussis / parapertussis - NA Reagents
15	01	40	08	00	Diphtheria (Corynebacterium D.) - NA Reagents
15	01	40	09	00	Tetanus (Clostridium T.) - NA Reagents
15	01	40	10	00	Haemophilus influenzae - NA Reagents
15	01	40	11	00	Neisseria meningitidis - NA Reagents
15	01	40	12	00	Proteus - NA Reagents
15	01	40	13	00	Pseudomonas - NA Reagents
15	01	40	14	00	Shigella - NA Reagents
15	01	40	90	00	Other Other Bacteriology - NA Reagents

15	01	90			Other Bacteriology Immunoassays	
15	01	90	01	00	Brucella	
15	01	90	02	00	Clostridium difficile	
15	01	90	03	00	Coxiella	
15	01	90	04	00	Leptospira	
15	01	90	05	00	Rickettsia	
15	01	90	06	00	Yersinia	
15	01	90	07	00	Bordetella pertussis / parapertussis	
15	01	90	08	00	Diphtheria (Corynebacterium D.)	
15	01	90	09	00	Tetanus (Clostridium T.)	
15	01	90	10	00	Haemophilus influenzae	
15	01	90	11	00	Neisseria meningitidis	
15	01	90	12	00	Proteus	
15	01	90	13	00	Pseudomonas	
15	01	90	14	00	Shigella	
15	01	90	90	00	Other Other Bacteriology Immunoassays	

15 02 **Hepatitis Viruses**

15 02 01 **Hepatitis A Virus**

15	02	01	02	00	HAV Antigen Confirmatory	
15	02	01	04	00	HAV Antibody (Total)	
15	02	01	05	00	HAV Antibody IgG	
15	02	01	06	00	HAV Antibody IgM	
15	02	01	40	00	Hepatitis A Virus - NA Reagents	
15	02	01	90	00	Other HAV Reagents	

15 02 02 **Hepatitis B Virus**

15	02	02	01	00	Hepatitis B Surface Antigen	HBsAg
15	02	02	02	00	Hepatitis B Surface Antigen - Confirmatory	
15	02	02	04	00	Hepatitis B Surface Antibody (Total)	Anti-HBs
15	02	02	05	00	Hepatitis B Surface Antibody IgG	
15	02	02	06	00	Hepatitis B Surface Antibody IgM	
15	02	02	11	00	Hepatitis B Core Antigen	HBcAg
15	02	02	12	00	Hepatitis B Core Antigen - Confirmatory	
15	02	02	14	00	Hepatitis B Core Antibody (Total)	Anti-HBc
15	02	02	15	00	Hepatitis B Core Antibody IgG	
15	02	02	16	00	Hepatitis B Core Antibody IgM	
15	02	02	21	00	Hepatitis Be Antigen	HBeAg
15	02	02	22	00	Hepatitis Be Antigen - Confirmatory	
15	02	02	24	00	Hepatitis Be Antibody (Total)	Anti-HBe
15	02	02	25	00	Hepatitis Be Antibody IgG	
15	02	02	26	00	Hepatitis Be Antibody IgM	
15	02	02	40	00	Hepatitis B Virus - NA Reagents	
15	02	02	90	00	Other Hepatitis B Reagents	

15	02	03			Hepatitis C Virus
15	02	03	01	00	HCV Antigen
15	02	03	02	00	HCV Antigen - Confirmatory
15	02	03	04	00	HCV Antibody (Total)
15	02	03	05	00	HCV Antibody IgG
15	02	03	06	00	HCV Antibody IgM
15	02	03	07	00	HCV Antibody - Confirmatory
15	02	03	40	00	Hepatitis C Virus - NA Reagents
15	02	03	90	00	Other HCV Reagents
15	02	04			Hepatitis Delta Virus
15	02	04	01	00	Hepatitis Delta Antigen
15	02	04	02	00	Hepatitis Delta Antigen - Confirmatory
15	02	04	04	00	Hepatitis Delta Antibody (Total)
15	02	04	05	00	Hepatitis Delta Antibody IgG
15	02	04	06	00	Hepatitis Delta Antibody IgM
15	02	04	40	00	Hepatitis Delta Virus - NA Reagents
15	02	04	90	00	Other HDV Reagents
15	02	05			Hepatitis E Virus
15	02	05	01	00	HEV Antigen
15	02	05	02	00	HEV Antigen - Confirmatory
15	02	05	04	00	HEV Antibody (Total)
15	02	05	05	00	HEV Antibody IgG
15	02	05	06	00	HEV Antibody IgM
15	02	05	07	00	HEV Antibody - Confirmatory
15	02	05	40	00	Hepatitis E Virus - NA Reagents
15	02	05	90	00	Other HEV Reagents
15	02	07			Hepatitis G Virus
15	02	07	01	00	HGV Antigen
15	02	07	02	00	HGV Antigen - Confirmatory
15	02	07	04	00	HGV Antibody (Total)
15	02	07	05	00	HGV Antibody IgG
15	02	07	06	00	HGV Antibody IgM
15	02	07	40	00	Hepatitis G Virus - NA Reagents
15	02	07	90	00	Other HGV Reagents
15	02	24			Hepatitis X Virus
15	02	24	01	00	HXV Antigen
15	02	24	02	00	HXV Antigen - Confirmatory
15	02	24	04	00	HXV Antibody (Total)
15	02	24	05	00	HXV Antibody IgG
15	02	24	06	00	HXV Antibody IgM
15	02	24	40	00	Hepatitis X Virus - NA Reagents
15	02	24	90	00	Other HXV Reagents
15	02	90			Other Hepatitis Viruses
15	02	90	90	00	Other Hepatitis Virus Reagents

15	03				Retroviruses
15	03	01			HIV 1
15	03	01	01	00	HIV 1 Antigen
15	03	01	02	00	HIV 1 Antigen - Confirmatory
15	03	01	04	00	HIV 1 Antibody (Total)
15	03	01	05	00	HIV 1 Antibody IgG
15	03	01	06	00	HIV 1 Antibody IgM
15	03	01	07	00	HIV 1 Antibody - Confirmatory
15	03	01	40	00	HIV 1 - NA Reagents
15	03	01	90	00	Other HIV 1 Reagents
15	03	02			HIV 2
15	03	02	01	00	HIV 2 Antigen
15	03	02	04	00	HIV 2 Antibody
15	03	02	07	00	HIV 2 Antibody - Confirmatory
15	03	02	40	00	HIV 2 - NA Reagents
15	03	02	90	00	Other HIV 2 Reagents
15	03	10			HIV P24
15	03	10	01	00	HIV P24 Antigen
15	03	10	04	00	HIV P24 Antibody
15	03	10	40	00	HIV P24 - NA Reagents
15	03	10	90	00	Other HIV P24 Reagents
15	03	20			HIV - Multiple (1 / 2)
15	03	20	01	00	HIV Multiple Antigen
15	03	20	04	00	HIV Multiple Antibody
15	03	20	07	00	HIV Multiple Antibody - Confirmatory
15	03	20	09	00	HIV Multiple Ag/Ab Combi Test
15	03	20	40	00	HIV Multiple - NA Reagents
15	03	20	90	00	Other HIV Multiple Reagents
15	03	30			HTLV I
15	03	30	01	00	HTLV I Antigen
15	03	30	04	00	HTLV I Antibody
15	03	30	07	00	HTLV I Antibody - Confirmatory
15	03	30	40	00	HTLV I - NA Reagents
15	03	30	90	00	Other HTLV I Reagents
15	03	31			HTLV II
15	03	31	01	00	HTLV II Antigen
15	03	31	04	00	HTLV II Antibody
15	03	31	07	00	HTLV II Antibody - Confirmatory
15	03	31	40	00	HTLV II - NA Reagents
15	03	31	90	00	Other HTLV II Reagents
15	03	40			HTLV Multiple
15	03	40	01	00	HTLV Multiple Antigen
15	03	40	04	00	HTLV Multiple Antibody
15	03	40	07	00	HTLV Multiple Antibody - Confirmatory
15	03	40	40	00	HTLV Multiple - NA Reagents
15	03	40	90	00	Other HTLV Multiple Reagents

15	04				Other Virology (Infect. Immunology)	
15	04	01			Rubella Virus	
15	04	01	04	00	Rubella Virus Antibodies - Total	
15	04	01	05	00	Rubella Virus IgG	
15	04	01	06	00	Rubella Virus IgM	
15	04	01	40	00	Rubella - NA Reagents	
15	04	01	90	00	Other Rubella Virus Reagents	
15	04	02			Cytomegalovirus	
15	04	02	01	00	CMV Antigen	
15	04	02	04	00	CMV Antibodies - Total	
15	04	02	05	00	CMV IgG	
15	04	02	06	00	CMV IgM	
15	04	02	40	00	CMV - NA Reagents	
15	04	02	90	00	Other CMV Reagents	
15	04	03			Herpes Simplex Virus	
15	04	03	01	00	HSV Antigen	
15	04	03	04	00	HSV Antibodies - Total	
15	04	03	05	00	HSV IgG	
15	04	03	06	00	HSV IgM	
15	04	03	07	00	HSV 1 Antibodies - Total	
15	04	03	08	00	HSV 1 IgG	
15	04	03	09	00	HSV 1 IgM	
15	04	03	10	00	HSV 2 Antibodies - Total	
15	04	03	11	00	HSV 2 IgG	
15	04	03	12	00	HSV 2 IgM	
15	04	03	40	00	HSV - NA Reagents	
15	04	03	90	00	Other HSV Reagents	
15	04	04			Epstein Barr Virus	
15	04	04	04	00	EBV Antibodies	
15	04	04	11	00	cr Mononucleosis Inf. Imm.=> 15 70 90 03	
15	04	04	40	00	EBV - NA Reagents	
15	04	04	90	00	Other EBV Reagents	
15	04	40			Other Virology - NA Reagents	
15	04	40	01	00	Adenovirus - NA Reagents	
15	04	40	02	00	Enterovirus - NA Reagents	
15	04	40	03	00	Human Papilloma Virus - NA Reagents	HPV
15	04	40	04	00	Influenza & Para Influenza - NA Reagents	RSV
15	04	40	05	00	Respiratory Syncytial Virus (RSV) - NA Reagents	
15	04	40	06	00	Rotavirus - NA Reagents	
15	04	40	07	00	Measles - NA Reagents	
15	04	40	08	00	Mumps / Parotitis - NA Reagents	
15	04	40	09	00	Parvovirus B 19 - NA Reagents	
15	04	40	10	00	Varicella Zoster Virus - NA Reagents	
15	04	40	11	00	Dengue Virus - NA Reagents	
15	04	40	12	00	FSME Virus - NA Reagents	FSME
15	04	40	13	00	LCM Virus - NA Reagents	LCM
15	04	40	14	00	Hantavirus / Bunyavirus - NA Reagents	
15	04	40	90	00	Other Virology - NA Reagents	

15	04	80			Other Virology Antigen/Antibody Detection	
15	04	80	01	00	Adenovirus	
15	04	80	02	00	Enterovirus	HPV
15	04	80	03	00	Human Papilloma Virus	
15	04	80	04	00	Influenza & Para Influenza	RSV
15	04	80	05	00	Respiratory Syncytial Virus (RSV)	
15	04	80	06	00	Rotavirus	
15	04	80	07	00	Measles	
15	04	80	08	00	Mumps / Parotitis	
15	04	80	09	00	Parvovirus B 19	
15	04	80	10	00	Varicella Zoster	
15	04	80	11	00	Dengue Virus	
15	04	80	12	00	FSME Virus	FSM
15	04	80	13	00	LCM Virus	LCM
15	04	80	14	00	Hantavirus / Bunyavirus	
15	04	80	90	00	Other Viral Antigen/Antibody Detection	
15	04	90			Other Other Virology	
15	04	90	90	00	Other Other Virology Reagents	
15	05				Parasitology (Infect. Immunology)	
15	05	01			Toxoplasma	
15	05	01	04	00	Toxoplasma Antibody (Total)	
15	05	01	05	00	Toxoplasma Antibody IgG	
15	05	01	06	00	Toxoplasma Antibody IgM	
15	05	01	90	00	Other Toxoplasma Antibody	
15	05	10			Miscellaneous Parasitology (Antibodies)	
15	05	10	01	00	Entamoeba histolytica	
15	05	10	02	00	Chagas	
15	05	10	03	00	Distomatosis	
15	05	10	04	00	Echinococcus	
15	05	10	05	00	Leishmania	
15	05	10	06	00	Schistosoma	
15	05	10	07	00	Cryptosporidium	
15	05	10	08	00	Giardia lamblia	
15	05	10	90	00	Other Parasitology	
15	06				Mycology (Infect. Immunology)	
15	06	01			Mycology Immunoassays	
15	06	01	01	00	Aspergillus	
15	06	01	02	00	Candida albicans	
15	06	01	90	00	Other Mycology Immunoassays	
15	30				Multiple Parameters - Infect. Immunology	
15	30	02			Multiple Viruses	
15	30	02	40	00	HCV / HIV Combination - NA Reagents	
15	30	02	90	00	Other Multiple Viruses	

15 50 **Controls/Standards/Calibrators - Infect. Immunology**

15 50 01 **Controls/Standards/Calibrators - Infect. Immunology**

15 50 01 01 00 Bacteriology Controls - Inf.Imm.
15 50 01 02 00 Hepatitis Virus Controls - Inf.Imm.
15 50 01 03 00 Retrovirus Controls - Inf.Imm.
15 50 01 04 00 Other Virology Controls - Inf.Imm.
15 50 01 05 00 Parasitology Controls - Inf.Imm.
15 50 01 06 00 Mycology Controls - Inf.Imm.
15 50 01 30 00 Multiconstituent Controls - Inf.Imm.
15 50 01 90 00 Other Controls Inf. Immunology

15 70 **Rapid Tests - Infectious Immunology**

15 70 01 **Bacteriology Rapid Tests**

15 70 01 01 00 Chlamydia AG - Rapid Test
15 70 01 02 00 H. Pylori - Rapid Test
15 70 01 03 00 Strep A - Rapid Test
15 70 01 04 00 Strep B - Rapid Test
15 70 01 05 00 Syphilis - Rapid Test
15 70 01 90 00 Other Bacteriology Rapid Tests

15 70 02 **Hepatitis Viruses Rapid Tests**

15 70 02 01 00 HBsAg - Rapid Test
15 70 02 02 00 HCV Antibody - Rapid Test
15 70 02 90 00 Other Hepatitis Viruses Rapid Tests

15 70 03 **Retroviruses Rapid Test**

15 70 03 01 00 HIV 1 - Rapid Test
15 70 03 02 00 HIV 1 / 2 - Rapid Test
15 70 03 90 00 Other Retroviruses Rapid Tests

15 70 90 **Other Virology Rapid Tests**

15 70 90 01 00 CMV - Rapid Test
15 70 90 02 00 RSV - Rapid Test
15 70 90 03 00 cr Mononucleosis - Rapid Test Inf. Imm.=>15 04 04 11
15 70 90 90 00 Other Other Virology Rapid Tests

15 90 **Other Infectious Immunology**

15 90 90 **Other Infectious Immunology Reagents**

15 90 90 01 00 Buffers (unassignable), Supplem. Reagents, etc
15 90 90 40 00 Supplem. Reagents, etc - NA Reagents
15 90 90 90 00 Other Other Infectious Immunology Reagents

16

Genetic Testing

(= in vitro tests for the detection of gene and chromosome alterations)

16 01

Inborn Gene or Chromosome Alterations

16 01 01

Monogenetic Disorders

16	01	01	01	00	Cystic Fibrosis
16	01	01	02	00	Duchenne Muscular Dystrophy
16	01	01	03	00	Factor V Leiden
16	01	01	04	00	Fragile X Syndrome
16	01	01	05	00	Haemochromatosis
16	01	01	06	00	Haemophilia
16	01	01	07	00	Huntington Chorea
16	01	01	08	00	Polycystic Kidney Disease
16	01	01	09	00	Sickle Cell Anemia
16	01	01	10	00	Tay Sachs Disease
16	01	01	11	00	Thalassaemia
16	01	01	12	00	Friedreich's Ataxia
16	01	01	13	00	Spihocerebellar Ataxins Type 1,2,3,6,7,8
16	01	01	14	00	Prothrombin Mutation
16	01	01	90	00	Other Monogenetic Disorders Tests

16 01 02

Polygenetic Disorders

16	01	02	01	00	Alzheimer's Disease
16	01	02	02	00	Asthma
16	01	02	03	00	Atherosclerosis
16	01	02	04	00	Diabetes
16	01	02	05	00	Hypertension
16	01	02	06	00	Multiple Sclerosis
16	01	02	07	00	Osteoporosis
16	01	02	90	00	Other Polygenetic Disorders Tests

16 01 03

Chromosomal Disorders

16	01	03	01	00	Down's Syndrome
16	01	03	02	00	Edwards Syndrome
16	01	03	03	00	Klinefelter syndrome
16	01	03	04	00	Patau Syndrome
16	01	03	05	00	Turner Syndrome
16	01	03	90	00	Other Chromosomal Disorders Tests

16 01 04

Polymorphisms

16	01	04	01	00	HLA-Typing
16	01	04	90	00	Other Polymorphism Tests

16	02				Acquired Gene or Chromosome Alterations
16	02	01			Acquired Gene or Chromosome Alterations
16	02	01	01	00	p53
16	02	01	02	00	k-ras
16	02	01	03	00	BRCA 1+2
16	02	01	04	00	ret
16	02	01	05	00	c-myc
16	02	01	06	00	HNPCC
16	02	01	07	00	APC
16	02	01	08	00	t(9;22)
16	02	01	09	00	t(8;14)
16	02	01	10	00	t(14;18)
16	02	01	11	00	inv (16)
16	02	01	12	00	Telomerase
16	02	01	13	00	HER-2/neu
16	02	01	90	00	Other Acquired Gene or Chromosome Alteration Tests
16	90				Other Genetic Testing
16	90	90	01	90	Other Other Genetic Tests

Alphabetical Order by Parameter

(= in vitro tests for the detection of gene and chromosome alterations)

(= in vitro tests for the detection of gene and chromosome alterations)

12	06	03	09	00		1.25 Dihydroxyvitamin D3		1,25(OH) ₂ -D
12	05	01	14	00		11-Desoxycortisol		
12	05	01	07	00		17 OH Progesterone		
12	06	05	03	00		17-Hydroxy-Ketosterone		17OH
12	06	05	04	00		17-Ketogenic Steroids		17KGS
12	06	05	05	00		17-Ketosteroids		17KS
12	06	03	10	00		25-Hydroxyvitamin D3		25-OH-D
12	03	90	05	00		5 HIAA		
12	09	02	02	00		5-Aminolevulinatase Dehydratase		
11	01	01	01	00		5'-Nucleotidase		NTP
12	09	01	16	00		6-Acethylmorphium		
12	01	90	01	00		a1-Acid Glycoprotein (Orosomuroid)		AGP
12	01	90	02	00		a1-Antitrypsin (Protease inhibitor)		AAT
12	01	90	04	00		a1-Microglobulin		A1M
13	02	05	01	00		a2-Antiplasmin		a2AP
12	01	90	03	00		a2-Macroglobulin		A2M
13	03	01	01	00		ABO grouping cells		
13	03	01	02	00		ABO sera		
13	03	01				ABO Typing		
12	09	02	01	00		Acetaminophene (Paracetamol)		
12	10	90	23	00		Acetylcholin Receptor Antibodies		ARA
11	01	01	02	00	cr	Acid Phosphatase (CC)	IC => 12.03.01.37	ACP
16	02					Acquired Gene or Chromosome Alterations		
16	02	01				Acquired Gene or Chromosome Alterations		
13	02	01	04	00		Activated Clotting Time		ACT
13	02	70	04	00		Activated Clotting Time Rapid Test		ACT
13	02	01	02	00		Activated Partial Thromboplastin Time		APTT
13	02	70	02	00		Activated Partial Thromboplastin Time Rapid Test		
14	01	01	04	00		Additives for DCM		
15	04	80	01	00		Adenovirus		
15	04	40	01	00		Adenovirus - NA Reagents		
12	06	90	13	00		Adrenalin		
12	06	30	01	00		Adrenalin / Noradrenalin / Dopamin		
12	06	04	01	00		Adrenocortiotropic Hormone		ACTH
14	01	06	01	00		Adult Bottles (Blood Culture -Autom.)		
14	01	03	01	00		Agar Media for Pouring (Bottles)		
13	02	04	01	00		Aggregation Reagents		
11	01	01	03	00		Alanine Amino-Transferase		ALT/SGPT
11	02	01	01	00	cr	Albumin (CC)	IC =>12.01.03.01	
12	01	03	01	00	cr	Albumin (IC) incl. uAlbumin	CC =>11.02.01.01	
11	70	03	02	00		Albumin in stool (Meconium)		
11	01	01	04	00		Aldolase		ALS
12	06	02	01	00		Aldosterone		
11	01	01	05	00		Alkaline Phosphatase - Total		ALP/AP
11	01	01	06	00	cr	Alkaline Phosphatase Isoenzymes(CC)	IC => 12.06.03.01	iso-AP
12	02	01	11	00		Allergene specific IgA		
12	02	01	12	00		Allergene specific IgG		

12	02				Allergy		
12	02	01			Allergy		
12	05	02	01	00	Alpha2-Pregnancy Associated Glycoprotein	a2-PAG	
12	03	90	01	00	Alphafetoprotein	AFP	
16	01	02	01	00	Alzheimer's Disease		
12	90	01	02	00	Amanitin (Organic poisons)		
12	06	05	06	00	a-Melanocyte Stimulating Hormones		
12	08	03	01	00	Amikacin		
12	09	02	03	00	Amitriptyline		
11	03	01	01	00	Ammonia	NH3	
11	04	01	01	00	Ammonia - Electrodes	NH3	
12	09	01	02	00	Amphetamine/Methamphetamine Specific (+Ecstasy)		
12	70	09	01	00	Amphetamines - Rapid Test		
12	09	01	01	00	Amphetamines Group		
11	01	01	07	00	Amylase - Total	AMS/AMY	
11	01	01	08	00	Amylase Isoenzyme	iso-AMS	
12	10	01	01	00	ANA Screening	ANA	
12	50	01	11	00	Anaemia Related/Vitamin Standards and Calibrators		
12	50	01	12	00	Anaemia Related/Vitamine Controls		
14	02	01	05	00	Anaerobes - Automated		
14	02	02	05	00	Anaerobes - Manual		
12	05	01	12	00	Androstenediol-Glucuronide		
12	05	01	01	00	Androstenedione		
12	05	01	11	00	Androsterone		
12	07	01			Anemia		
12	07				Anemia Related / Vitamin Tests		
11	01	01	09	00	cr Angiotensin Converting Enzyme (CC) IC =>12.06.02.03	ACE	
12	06	02	03	00	cr Angiotensin Converting Enzyme (IC) CC =>11.01.01.09		
12	06	02	02	00	Angiotensine I / II		
12	10	01	03	00	Anti cytoplasmic - Antibodies		
12	01	01	40	00	Anti Human Ig polyvalent antisera		
12	08	04			Anti-Asthma TDM		
12	08	03			Antibiotic TDM		
13	05	01	01	00	Antibodies for B and T-cell subtyping		
13	05	01	02	00	Antibodies for HLA class II determinants		
13	05	01	06	00	Antibodies for Lymphocyte subtyping		
13	05	01	03	00	Antibodies for lymphoma typing(except B-&T-cell typing)		
13	05	01	04	00	Antibodies for recognizing cell surface receptors		
13	05	01	05	00	Antibodies for subtyping of leukemia(except B-&T-cell typing)		
12	10	90	16	00	Antibodies to endomysial Autoantigenes		
12	10	90	15	00	Antibodies to Glomerular Basal Membrane		
12	10	90	17	00	Antibodies to soluble Liverantigenes		
13	03	04	01	00	Antibody 2 cell screening		
13	03	04	02	00	Antibody 3 cell screening		

13	03	04			Antibody detection (Immunohaematology)	
13	03	04	03	00	Antibody identification cell panels	
12	10	02	08	00	Anti-CAR (Cancer Associated Retinopathy)	
12	10	90	01	00	Anti-Cardiolipin Antibodies	ACA
12	10	01	15	00	Anti-centromere Antibodies	
12	10	02	01	00	Anti-Ganglioside-Antibodies Total	
12	10	02	04	00	Anti-GD1b	
12	10	02	02	00	Anti-GM1	
12	10	02	12	00	Anti-GQ1b	
12	02	01	01	00	Anti-Histamine	
12	10	02	09	00	Anti-Hu Antibody	
12	10	02	07	00	Anti-MAG (Myelin Associated Glycoprotein)	
12	10	90	02	00	Anti-Mitochondrial Antibodies	AMA
12	08	05			Anti-Neoplastic TDM	
13	02	06	01	00	Antiphospholipid antibodies	
12	10	90	03	00	Anti-Phosphatidylserin Antibodies	
12	10	02	11	00	Anti-Ri Antibody	
12	90	01	01	00	Antisera (monovalent and polyvalent)	
12	10	90	04	00	Anti-β2-Glycoprotein I Antibodies	
12	11	01	07	00	Anti-Staphylolysin (qualitative)	AStAL
12	11	01	06	00	Anti-Staphylolysin Reaction (quantitative)	AStAR
12	11	01	01	00	Anti-Streptococcal D Nase B	ADNase
12	11	01	02	00	Anti-Streptococcal Hyaluronidase	
12	11	01	03	00	Anti-Streptokinase (ASK)	ASK
12	11	01	04	00	Anti-Streptolysin Reaction /Titre (quantitative)	ASR
12	11	01	05	00	Anti-Streptolysin/Anti-Streptolysin O (qualitative)	ASL/ASO
13	02	06	02	00	Antithrombin III	AT III
12	10	02	10	00	Anti-Yo Antibody	
16	02	01	07	00	APC	
13	02	03	04	00	APC Resistance	
13	02	06	11	00	APC Resistance	
12	01	04	01	00	Apolipoprotein A I	Apo A I
12	01	04	02	00	Apolipoprotein A II	Apo A II
12	01	04	03	00	Apolipoprotein B	Apo B
12	01	04	11	00	Apolipoprotein E Genotyping Sub-typing GT=>16 01 02 03 00 Atherosclerosis	
11	50	03	03	00	Aqueous Standards (CC)	
12	10	02	03	00	Asialo-GM1	
11	01	01	10	00	Aspartate Amino-Transferase	AST/SGOT
15	06	01	01	00	Aspergillus	
11	50	01	02	00	Assayed Multicomponent Sera - Abnormal (CC)	
11	50	01	01	00	Assayed Multicomponent Sera - Normal (CC)	
16	01	02	02	00	Asthma	
12	11	01	21	00	A-Streptococcal Screening	
16	01	02	03	00	Atherosclerosis	
12	13	01	01	00	Atrial- Brain Natriuric Peptide (incl. Pro-ANP/BNP)	
12	04	05	04	00	Atrial Natriuretic Peptide	
12	10	01			Autoimmune Connective Tissue Disease	
12	10				Auto-Immune Diseases	
13	02	80			Auxiliary Reagents and Supplements (Haemostasis)	

14	01				Bacteriology - Culture		
14	02				Bacteriology - Identification & Susceptibility Testing		
15	01				Bacteriology (Infect. Immunology)		
15	50	01	01	00	Bacteriology Controls - Inf.Imm.		
15	70	01			Bacteriology Rapid Tests		
12	09	01	03	00	Barbiturates		
12	70	09	02	00	Barbiturates - Rapid Test		
12	09	01	04	00	Benzodiazepines		
12	70	09	03	00	Benzodiazepines - Rapid Test		
12	03	90	02	00	Beta2-Microglobuline		ß2-M
11	03	01	02	00	Bicarbonate		HCO3
11	02	01	02	00	Bile acids		
11	02	01	03	00	Bilirubin		
11	50	02	03	00	Bilirubin Control Sera		
14	02	01			Biochemical Identification - Automated		
14	02	02			Biochemical Identification - Manual		
12	03	01	01	00	Bladder Tissue Antigen		BTA
14	01	05			Blood Culture - Manual		
14	01	06			Blood Culture / Mycobacteria Culture - Automated		
11	04	04	03	00	Blood Gas Buffers and Solutions		
11	50	90	01	00	Blood gas control		
11	04	02			Blood Gas Electrodes		
11	70	01			Blood Test Strips (CC)		
12	06	05	01	00	Bombesin		
12	06	03	01	00	cr Bone Alkaline Phosphatase (IC)	CC =>11.01.01.06 iso-AP	BAP
12	06	03			Bone and Mineral Metabolism Assays		
15	01	90	07	00	Bordetella pertussis / parapertussis		
15	01	40	07	00	Bordetella pertussis / parapertussis - NA Reagents		
12	70	01	54	00	Brain Natriuric peptide - Rapid Test		
16	02	01	03	00	BRCA 1+2		
14	02	04	01	00	Break-point Systems (Automated)		
14	01	03	02	00	Broth Media (Bottles)		
14	01	02	01	00	Broth Media (Tubes)		
14	01	05	01	00	Broth only (Blood Culture - Manual)		
15	01	90	01	00	Brucella		
15	01	40	01	00	Brucella - NA Reagents		
12	70	03	01	00	BTA - Rapid Test		BTA
13	02	80	03	00	Buffers (Haemostasis)		
15	90	90	01	00	Buffers (unassignable), Supplem. Reagents, etc		
12	90	01	70	00	Buffers (unassignable), Supplem. Reagents, etc (IC)		
11	90	01	01	00	Buffers (unassignable), Supplem. Reagents, etc (CC)		
12	01	01	80	00	Buffers (unassignable), Supplem. Reagents, etc (Ig's)		

12	08	04	01	00	Caffeine	
12	06	03	02	00	Calcitonin	
11	03	01	03	00	Calcium	Ca
11	04	01	02	00	Calcium - Electrodes	Ca
13	02	80	01	00	Calcium Chloride	
11	70	01	50	00	Calibrators and Controls (Blood Test Strips)	
11	50	03			Calibrators and Standards (Clinical Chemistry)	
11	50	03	01	00	Calibrators Multicomponent (CC)	
11	50	03	02	00	Calibrators Single Component (CC)	
15	01	14			Campylobacter	
15	01	14	40	00	Campylobacter Detection by NA Reagents	
15	01	14	01	00	Campylobacter Direct Antigen Detection	
12	03	01	06	00	Cancer Antigen 125	CA 125
12	03	01	02	00	Cancer Antigen 15-3	CA 15-3
12	03	01	07	00	Cancer Antigen 195	CA 195
12	03	01	03	00	Cancer Antigen 19-9	CA 19-9
12	03	01	08	00	Cancer Antigen 242	CA 242
12	03	01	10	00	Cancer Antigen 27,29	
12	03	01	04	00	Cancer Antigen 50	CA 50
12	03	01	09	00	Cancer Antigen 549	CA 549
12	03	01	05	00	Cancer Antigen 72-4	CA 72-4
12	03	01			Cancer Antigens	
12	03	01	46	00	Cancer Associated Serum Antigen	CASA
15	06	01	02	00	Candida albicans	
12	09	01	05	00	Cannabinoids	THC
12	70	09	04	00	Cannabinoids - Rapid Test	THC
12	08	02	01	00	Carbamazepine	
12	12	01	02	00	Carbo Hydrate Deficient Transferrin	CDT
11	04	02	01	00	Carbon Dioxide - Electrodes	pCO2
12	03	01	31	00	Carcinoembryonic Antigen	CEA
42	04	05			Cardiac Marker	
12	50	01	08	00	Cardiac Marker Controls	
12	50	01	07	00	Cardiac Marker Standards / Calibrators	
12	13				Cardiac Markers	
12	08	01			Cardiovascular TDM	
12	09	02	04	00	Catecholamines	
12	03	90	03	00	Cathepsin-D	
13	01	01	01	00	CBC-Reagents (Cleaning-/Diluting-/Lysing-/Sheat-fluids)	
14	04	01	01	00	Cells for Tissue Culture	
13	01	09	01	00	Cellular enzyme determination reagents (G-6-PDH, Pyuvate Kinase)	
13	01	03			Cellular Stains for Microscopy	
12	10	01	04	00	CENP - Antibodies	
12	08	02			Central Nervous Systems TDM	
12	01	03	02	00	Ceruloplasmin	
15	05	10	02	00	Chagas	

15	01	01			Chlamydia	
15	70	01	01	00	Chlamydia AG - Rapid Test	
15	01	01	03	00	Chlamydia Antibody Assays Total	
15	01	01	04	00	Chlamydia Antibody IgA	
15	01	01	05	00	Chlamydia Antibody IgG	
15	01	01	06	00	Chlamydia Antibody IgM	
15	01	01	01	00	Chlamydia Antigen Detection	
15	01	01	40	00	Chlamydia Detection by NA Reagents	
12	08	03	02	00	Chloramphenicol	
11	03	01	04	00	Chloride	Cl
11	04	01	03	00	Chloride - Electrodes	Cl
11	02	01	05	00	Cholesterol	
11	70	01	02	00	Cholesterol Test Strips	
11	01	01	11	00	Cholinesterase	CHE
16	01	03			Chromosomal Disorders	
13	07	01	01	00	Chromosome culture Kits / reagents	
11	01	01	12	00	Chymotrypsin	
12	11	01	08	00	Circulating Immune Complexes	CIC
13	02	80	02	00	Citrate	
12	70	01	51	00	CK - MB / Myoglobin - Rapid Test	
11					Clinical Chemistry	
15	01	90	02	00	Clostridium difficile	
15	01	40	02	00	Clostridium difficile - NA Reagents	
15	04	02	40	00	CMV - NA Reagents	
15	70	90	01	00	CMV - Rapid Test	
15	04	02	04	00	CMV Antibodies - Total	
15	04	02	01	00	CMV Antigen	
15	04	02	05	00	CMV IgG	
15	04	02	06	00	CMV IgM	
16	02	01	05	00	c-myc	
13	02	02	17	00	Coagulation factor HMW-Kininogen (Fitzgerald)	
13	02	02	02	00	Coagulation factor II (Prothrombin)	F II
13	02	02	03	00	Coagulation factor II a (Thrombin)	F IIa
13	02	02	10	00	Coagulation factor II, VII, X	
13	02	02	08	00	Coagulation factor IX	F IX
13	02	06	05	00	Coagulation factor IX Inhibitor	
13	02	02	04	00	Coagulation factor V	F V
13	02	02	05	00	Coagulation factor VII	F VII
13	02	02	06	00	Coagulation factor VII a	F VIIa
13	02	02	07	00	Coagulation factor VIII	F VIII
13	02	06	04	00	Coagulation factor VIII Inhibitor	
13	02	02	18	00	Coagulation factor von Willebrand Antigen	VWF
13	02	02	22	00	Coagulation factor von Willebrand CBA	
13	02	02	21	00	Coagulation factor von Willebrand RCO	
13	02	02	09	00	Coagulation factor X	F X
13	02	06	06	00	Coagulation factor X Inhibitor	
13	02	02	11	00	Coagulation factor XI	F XI
13	02	02	12	00	Coagulation factor XII	F XII
13	02	02	13	00	Coagulation factor XII a	F XIIa
13	02	02	14	00	Coagulation factor XIII	F XIII
13	02	02	15	00	Coagulation factor XIII A	
13	02	02	16	00	Coagulation factor XIII S	

13	02	02			Coagulation Factors	
13	02	06			Coagulation Inhibitors/Thrombophilia Markers	
13	02	80	80	00	Coated tubes (Citrate, Heparin etc.)	
12	90	01	80	00	Coated Tubes and Beads (unassignable) (IC)	
12	09	01	06	00	Cocaine + Cocaine Metabolites	
12	70	09	05	00	Cocaine + Cocaine Metabolites - Rapid Test	
12	09	01	07	00	Codeine	
12	06	03	03	00	Collagen Type I C-terminal Propeptide	C I CP
12	06	03	04	00	Collagen Type III C-terminal Propeptide	
13	06	01	06	00	Colony Stimulating Factors (G-CSF,M-CSF,GM-CSF)	CSF
14	02	04	03	00	Combined Susceptibility & Identification Systems (Auto)	
11	04	04	05	00	Common Buffers and Solutions (Electrolytes)	
12	10	90	05	00	Complement Activation	CAE
12	01	02	04	00	Complement Component for Bb	FBb
12	01	02	02	00	Complement Component C1 inactivator	C1 INA
12	01	02	01	00	Complement Component C1q	C1q
12	01	02	03	00	Complement Component C3/C3c	C3/C3c
12	01	02	05	00	Complement Component C4	C4
12	01	02	07	00	Complement Component C5-9	C5-9
12	01	02	06	00	Complement Component C5a	C5a
12	01	02			Complement Components	
13	04	01	01	00	Complement for HLA testing	
12	03	01	34	01	Complexed Prostatic Specific Antigen	cPSA
12	03	04	42	00	Complexed Prostatic Specific Antigen	cPSA
13	01	20	02	00	Control Blood Abnormal	
13	01	20	03	00	Control Blood Multilevel	
13	01	20	01	00	Control Blood Normal	
13	03	20	02	00	Control Kits (Immunohaematology)	
13	02	50	02	00	Control Plasmas	
11	50	90	02	00	Control urine	

11	50					Controls/Standards/Calibrators Clinical Chemistry	
15	50					Controls/Standards/Calibrators - Infect. Immunology	
15	50	01				Controls/Standards/Calibrators - Infect. Immunology	
14	50					Controls/Standards/Calibrators - Microbiology	
14	50	01				Controls/Standards/Calibrators - Microbiology	
12	50					Controls/Standards/Calibrators Immunochemistry	
12	50	01				Controls/Standards/Calibrators Immunochemistry	
13	03	20	01	00		Coombs Control Cells	
11	02	01	06	00		Copper	Cu
12	05	01	13	00		Corticoid-binding Globulin	
12	05	01	15	00		Corticosteron (R/M)	
12	06	02	04	00		Cortisol	
12	09	01	08	00		Cotinine	
15	01	90	03	00		Coxiella	
15	01	40	03	00		Coxiella - NA Reagents	
12	06	01	01	00		C-Peptide	
12	11	01	09	00		C-Reactive Protein	CRP
12	70	11	01	00		C-Reactive Protein - Rapid Test	CRP
11	01	01	13	00		Creatine Kinase - Total	CK
11	01	01	15	00		Creatine Kinase Isoenzymes	iso-CK
11	01	01	14	00	cr	Creatine Kinase - MB "Activity"(CC) IC =>12.01.05.02	CK-MB
12	04	05	02	00	cr	Creatine Kinase - MB "Mass" (IC) CC =>11.01.01.14	CK-MB
12	13	01	02	00	cr	Creatine Kinase - MB "Mass" (IC) CC =>11.01.01.14.00	CK-MB
11	02	01	07	00		Creatinine	
11	04	03	01	00		Creatinine - Electrodes	
12	06	03	05	00		Cross-Linked C-Telopeptides	CTx
12	06	03	06	00		Cross-Linked N-Telopeptides	NTx
14	05	02	03	00		Cryptosporidium	
15	05	10	07	00		Cryptosporidium	
11	50	90	03	00		CSF controls	
12	06	03	07	00		Cyclic Adenosin Monophosphate	cAMP
12	06	90	19	00		Cyclic Guanosine Monophosphate	cGMP
12	08	06	02	00		Cyclosporine Specific	
12	08	06	01	00		Cyclosporine Total	
12	03	01	20	00		CYFRA 21-1	
16	01	01	01	00		Cystic Fibrosis	
13	07	01	02	00		Cytochemical staining reagents	
13	06					Cytokines (Lymphokines) / Immunmodulators	
13	06	01				Cytokines (Lymphokines) / Immunmodulators	
15	04	02				Cytomegalovirus	

14	01	01	01	00	DCM (except susceptibility testing)	
14	01	01	02	00	DCM (susceptibility testing)	
14	03	01	01	00	DCM for Yeasts and Fungi	
13	02	05	03	00	D-Dimer	
13	02	70	03	00	D-Dimer - Rapid Test	
14	03	01			Dehydrated Culture Media (Mycology)	
14	01	01			Dehydrated Culture Media (Bacteriology)	
12	05	01	02	00	Dehydro-epiandrosterone Sulphate (incl. DHEA)	DHEAS/DHEA
11	02	01	09	00	Delta-Aminolaevulinic acid	ALAD
15	04	80	11	00	Dengue Virus	
15	04	40	11	00	Dengue Virus - NA Reagents	
12	06	03	08	00	Deoxyripyridinoline	DPD
12	09	02	05	00	Desipramine	
16	01	02	04	00	Diabetes	
12	06	01			Diabetes Assays (Hormones)	
11	50	02	05	00	Diabetes Controls	
12	08	03	03	00	Dibekacin	
12	08	01	02	00	Digitoxin	
12	08	01	01	00	Digoxin	
14	01	02	30	00	Dip Slides (Bacteriology)	
14	03	03	02	00	Dip Slides (Mycology)	
14	01	05	02	00	Diphasic (Blood Culture - Manual)	
15	01	90	08	00	Diphtheria (Corynebacterium D.)	
15	01	40	08	00	Diphtheria (Corynebacterium D.) - NA Reagents	
12	08	01	03	00	Disopyramide	
15	05	10	03	00	Distomatosis	
13	07	01	03	00	DNA in situ Hybridisation reagents	
12	06	90	15	00	Dopamine	
16	01	03	01	00	Down's Syndrome	
12	09	02	06	00	Doxepin plus metabolites	
12	09	01			Drugs of Abuse	
12	09				Drugs of Abuse / Toxicology	
12	10	01	05	00	ds DNA - Antibodies	
16	01	01	02	00	Duchenne Muscular Dystrophy	
11	02	01	08	00	D-Xylose	

15	01	15	40	00	E. Coli Detection by NA Reagents	
15	01	15	01	00	E. Coli Direct Antigen Detection	
15	01	15	11	00	E. Coli toxin	
15	04	04	40	00	EBV - NA Reagents	
15	04	04	04	00	EBV Antibodies	
15	05	10	04	00	Echinococcus	
16	01	03	02	00	Edwards Syndrome	
12	06	90	12	00	Elastase (Pancreatic Polypeptide)	
11	04				Electrodes and Biosensors	
11	50	02	04	00	Electrolyte Controls	
11	04	04	02	00	Electrolyte Electrode Buffers and Solutions	
11	04	01			Electrolyte Electrodes	
11	03				Electrolytes (excluding Electrodes)	
11	03	01			Electrolytes (Reagents)	
11	90	01	10	00	Electrophoresis Media (unassignable)	
13	07	01	04	00	Embedding media (Histology/Cytology)	
12	10	01	02	00	ENA Screening	ENA
12	06	04			Endocrine Hormones and Peptides	
13	03	04	06	00	Enhancement Media (e.g. Bovine Albumin,LISS,PEG)	
14	01	03	04	00	Enrichment media (Bottles)	
15	05	10	01	00	Entamoeba histolytica	
14	02	01	01	00	Enterobacteriaceae - Automated	
14	02	02	01	00	Enterobacteriaceae - Manual	
15	04	80	02	00	Enterovirus	HPV
15	04	40	02	00	Enterovirus - NA Reagents	
11	50	02	01	00	Enzyme Control Sera	
11	01				Enzymes	
11	01	01			Enzymes	
13	03	04	07	00	Enzymes (e.g. Bromelin / Papain, etc.)	
15	04	04			Epstein Barr Virus	
13	01	09	11	00	Erythrocyte Sedimentation Rate Test	ESR
13	01	70	02	00	Erythrocytes (Ery)	
12	07	01	01	00	Erythropoietin	EPO
15	01	15			Escherichia Coli	
12	05	01	03	00	Estradiol	E2
12	05	02	02	00	Estriol	E3
12	03	02	01	00	Estrogen Receptor Assays	ER
12	05	02	04	00	Estrone	
12	09	02	07	00	Ethanol (Alcohol)	
12	08	02	02	00	Ethosuximide	
14	05	01			Extraction Reagents	

16	01	01	03	00	Factor V Leiden		
13	02	03	02	00	Factor V Leiden	GT=>16 01 01 03 00	
11	70	03	01	00	cr Faecal Occult Blood (CC)	IC =>12.03.90.04	FOB
11	70	03			Faeces Tests (CC)		
12	13	01	03	00	Fatty Acid Binding Protein		
42	04	05	03	00	Fatty Acid Binding Protein		
12	03	90	04	00	Fecal Occult Blood (IC)	CC =>11.70.03.01	FOB
12	07	01	02	00	Ferritin		
12	70	05			Fertility / Pregnancy Rapid Tests		
12	05				Fertility / Pregnancy Hormones / Proteins		
12	05	01			Fertility Function Hormones / Proteins		
13	02	03	03	00	Fibrin sensitivity monomer		FM
13	02	02	01	00	Fibrinogen Assays (Factor I)		FBG
13	02	05	02	00	Fibrinogen Degradation Products		FDP
13	02	05			Fibrinolysis		
13	02	03	04	00	Fibrinopeptide A		
12	01	90	05	00	Fibronectin		
13	07	01	05	00	Fixing reagents (Histology/Cytology)		
12	08	01	04	00	Flecainide		
12	07	01	03	00	Folate		
12	05	01	04	00	Follicle Stimulating Hormone		FSH
16	01	01	04	00	Fragile X Syndrome		
12	08	02	03	00	Free Carbamazepine		
12	05	02	03	00	Free Estriol		FE3
12	08	02	04	00	Free Phenytoin		
12	08	02	05	00	Free Primodine		
12	03	01	33	00	Free Prostatic Specific Antigen		fPSA
42	03	04	44	00	Free Prostatic Specific Antigen		fPSA
12	04	01	02	00	Free Thyroxine		FT4
12	04	01	01	00	Free Triiodothyronine		FT3
12	08	02	06	00	Free Valproic Acid		
16	01	01	12	00	Friedreich's Ataxia		
11	02	01	10	00	Fructosamine		
11	02	01	11	00	Fructose		
12	70	05	01	00	FSH - Rapid Test		FSH
15	04	80	12	00	FSME Virus		FSM
15	04	40	12	00	FSME Virus - NA Reagents		FSME

11	04	04	34	00	G6P-DH		G6P-DH
12	06	01	05	00	GAD II Antibodies and other ICA		
12	10	02	05	00	Gal(β1-3)		
11	02	01	12	00	Galactose		
12	10	02	06	00	GalNAc		
11	01	01	16	00	Gamma Glutamyltransferase		GGT
14	01	08	03	00	Gas Generating Kits		
12	06	90	01	00	Gastrin		
13	02	01			General Coagulation Tests		
16					Genetic Testing		
12	08	03	04	00	Gentamicin		
15	05	10	08	00	Giardia lamblia		
13	01	09	02	00	Glandula fever		
12	10	90	06	00	Gliadin Antibodies		
12	06	01	02	00	Glucagon		
11	02	01	13	00	Glucose		
11	04	03	02	00	Glucose - Electrodes		
11	70	01	01	00	Glucose Test Strips		
11	01	01	17	00	Glutamate Dehydrogenase		GLDH
11	04	03	03	00	Glycated Haemoglobin - Electrodes		
12	13	01	04	00	Glycogen Phosphorylase BB		
12	04	05	04	00	Glycogen Phosphorylase BB		
12	05	02	09	00	Glycoprotein a Subunit		
12	06	01	06	00	cr Glycosylated/Glycated Haemoglobin	CC=11.02.01.14	
11	02	01	14	00	cr Glycosylated/Glycated Haemoglobin	IC=12.06.01.06	HbA1/HbA1C
12	06	90	02	00	Gonadotropin-Releasing Hormone		LHRH
15	01	02	03	00	Gonococcal Antibody Assays Total		
15	01	02	01	00	Gonococcal Antigen Detection		
15	01	02			Gonococci		
15	01	02	40	00	Gonococci detection by NA Reagents		
12	10	90	07	00	Goodpasture Antibodies		
14	01	08	01	00	Gram's Stain		
15	70	01	02	00	H. Pylori - Rapid Test		
15	01	04	03	00	H. Pylori Antibody Assays		
15	01	04	01	00	H. Pylori Antigen Detection		
15	01	04	40	00	H. Pylori Detection by NA Reagents		
12	11	01	11	00	H1, H2a, H2b, H3, H4,Hn		
13	01	70	03	00	Haematocrit (HCT)		

13					Haematology / Histology / Cytology	
13	01	20			Haematology Controls and Calibrators	
13	01				Haematology Reagents	
16	01	01	05	00	Haemochromatosis	
13	01	70	01	00	Haemoglobin (Hb)	
13	01	02			Haemoglobin (Types) Testing	
13	01	20	04	00	Haemoglobin Control	
13	01	02	01	00	Haemoglobin determinations (Total Hb)	
13	01	02	02	00	Haemoglobin subtypes HbA2,HbC,HbF,HbS,etc.(excl. HbA1)	
16	01	01	06	00	Haemophilia	
14	02	01	06	00	Haemophilus & Neisseria - Automated	
14	02	02	06	00	Haemophilus & Neisseria - Manual	
15	01	90	10	00	Haemophilus influenzae	
15	01	40	10	00	Haemophilus influenzae - NA Reagents	
13	02	50			Haemostasis Controls	
13	02	70			Haemostasis Rapid Tests (Home Monitoring)	
13	02				Haemostasis Reagents (Coagulation)	
15	04	80	14	00	Hantavirus / Bunyavirus	
15	04	40	14	00	Hantavirus / Bunyavirus - NA Reagents	
12	01	03	03	00	Haptoglobin	
15	02	01	04	00	HAV Antibody (Total)	
15	02	01	05	00	HAV Antibody IgG	
15	02	01	06	00	HAV Antibody IgM	
15	02	01	02	00	HAV Antigen Confirmatory	
15	70	02	01	00	HBsAg - Rapid Test	
12	70	05	02	00	HCG - Rapid Test	HCG
15	30	02	40	00	HCV / HIV Combination - NA Reagents	
15	02	03	07	00	HCV Antibody - Confirmatory	
15	70	02	02	00	HCV Antibody - Rapid Test	
15	02	03	04	00	HCV Antibody (Total)	
15	02	03	05	00	HCV Antibody IgG	
15	02	03	06	00	HCV Antibody IgM	
15	02	03	01	00	HCV Antigen	
15	02	03	02	00	HCV Antigen - Confirmatory	
11	70	01	03	00	HDL Test Strips	
15	01	04			Helicobacter Pylori	
12	01	03	04	00	Hemopexin	
13	02	03	05	00	Heparin	
13	02	06	10	00	Heparin Cofactor II - Tissue Factor Pathway Inhibitor	

15	02	01			Hepatitis A Virus	
15	02	01	40	00	Hepatitis A Virus - NA Reagents	
15	02	02	14	00	Hepatitis B Core Antibody (Total)	Anti-HBc
15	02	02	15	00	Hepatitis B Core Antibody IgG	
15	02	02	16	00	Hepatitis B Core Antibody IgM	
15	02	02	11	00	Hepatitis B Core Antigen	HBcAg
15	02	02	12	00	Hepatitis B Core Antigen - Confirmatory	
15	02	02	04	00	Hepatitis B Surface Antibody (Total)	Anti-HBs
15	02	02	05	00	Hepatitis B Surface Antibody IgG	
15	02	02	06	00	Hepatitis B Surface Antibody IgM	
15	02	02	01	00	Hepatitis B Surface Antigen	HBsAg
15	02	02	02	00	Hepatitis B Surface Antigen - Confirmatory	
15	02	02			Hepatitis B Virus	
15	02	02	40	00	Hepatitis B Virus - NA Reagents	
15	02	02	24	00	Hepatitis Be Antibody (Total)	Anti-HBe
15	02	02	25	00	Hepatitis Be Antibody IgG	
15	02	02	26	00	Hepatitis Be Antibody IgM	
15	02	02	21	00	Hepatitis Be Antigen	HBeAg
15	02	02	22	00	Hepatitis Be Antigen - Confirmatory	
15	02	03			Hepatitis C Virus	
15	02	03	40	00	Hepatitis C Virus - NA Reagents	
15	02	04	04	00	Hepatitis Delta Antibody (Total)	
15	02	04	05	00	Hepatitis Delta Antibody IgG	
15	02	04	06	00	Hepatitis Delta Antibody IgM	
15	02	04	01	00	Hepatitis Delta Antigen	
15	02	04	02	00	Hepatitis Delta Antigen - Confirmatory	
15	02	04			Hepatitis Delta Virus	
15	02	04	40	00	Hepatitis Delta Virus - NA Reagents	
15	02	05			Hepatitis E Virus	
15	02	05	40	00	Hepatitis E Virus - NA Reagents	
15	02	07			Hepatitis G Virus	
15	02	07	40	00	Hepatitis G Virus - NA Reagents	
15	50	01	02	00	Hepatitis Virus Controls - Inf.Imm.	
15	02				Hepatitis Viruses	
15	70	02			Hepatitis Viruses Rapid Tests	
15	02	24			Hepatitis X Virus	
15	02	24	40	00	Hepatitis X Virus - NA Reagents	
12	03	04	45	00	HER-2	HER-2
16	02	01	13	00	HER-2/neu	
12	03	03	01	00	HER-2/neu GT=>16 02 01 13 00	HER-2/neu

15	04	03			Herpes Simplex Virus	
15	02	05	07	00	HEV Antibody - Confirmatory	
15	02	05	04	00	HEV Antibody (Total)	
15	02	05	05	00	HEV Antibody IgG	
15	02	05	06	00	HEV Antibody IgM	
15	02	05	01	00	HEV Antigen	
15	02	05	02	00	HEV Antigen - Confirmatory	
15	02	07	04	00	HGV Antibody (Total)	
15	02	07	05	00	HGV Antibody IgG	
15	02	07	06	00	HGV Antibody IgM	
15	02	07	01	00	HGV Antigen	
15	02	07	02	00	HGV Antigen - Confirmatory	
11	02	01	15	00	High Density Lipoprotein Cholesterol	HDL-C
12	09	02	08	00	Hippuric Acid	
13	02	03	06	00	Hirudin Test	
13	01	03	01	00	Histo/Cyto stains	
13	07				Histology/Cytology Reagents	
13	07	01			Histology/Cytology Reagents	
12	10	01	07	00	Histones	H1,H2a,H3,H4,... Hn
15	03	20			HIV - Multiple (1 / 2)	
15	03	01			HIV 1	
15	03	01	40	00	HIV 1 - NA Reagents	
15	70	03	01	00	HIV 1 - Rapid Test	
15	70	03	02	00	HIV 1 / 2 - Rapid Test	
15	03	01	07	00	HIV 1 Antibody - Confirmatory	
15	03	01	04	00	HIV 1 Antibody (Total)	
15	03	01	05	00	HIV 1 Antibody IgG	
15	03	01	06	00	HIV 1 Antibody IgM	
15	03	01	01	00	HIV 1 Antigen	
15	03	01	02	00	HIV 1 Antigen - Confirmatory	
15	03	02			HIV 2	
15	03	02	40	00	HIV 2 - NA Reagents	
15	03	02	04	00	HIV 2 Antibody	
15	03	02	07	00	HIV 2 Antibody - Confirmatory	
15	03	02	01	00	HIV 2 Antigen	
15	03	20	40	00	HIV Multiple - NA Reagents	
15	03	20	09	00	HIV Multiple Ag/Ab Combi Test	
15	03	20	04	00	HIV Multiple Antibody	
15	03	20	07	00	HIV Multiple Antibody - Confirmatory	
15	03	20	01	00	HIV Multiple Antigen	

15	03	10			HIV P24	
15	03	10	40	00	HIV P24 - NA Reagents	
15	03	10	04	00	HIV P24 Antibody	
15	03	10	01	00	HIV P24 Antigen	
13	04	01	02	00	HLA Antibody screening	
13	04	01	03	00	HLA Antigen typing	
13	04	01	04	00	HLA Control Cells	
13	04	04	05	00	HLA-DNA-Probes	GT=> 16 01 04 01 00
16	01	04	01	00	HLA-Typing	
16	02	01	06	00	HNPCC	
12	13	01	09	00	Homocysteine	
12	04	05	09	00	Homocysteine	
12	09	02	18	00	Homovanillic Acid	HVA
12	50	01	04	00	Hormone Controls	
12	50	01	03	00	Hormone Standards / Calibrators	
12	70	05	03	00	HPL - Rapid Test	HPL
15	04	03	40	00	HSV - NA Reagents	
15	04	03	07	00	HSV 1 Antibodies - Total	
15	04	03	08	00	HSV 1 IgG	
15	04	03	09	00	HSV 1 IgM	
15	04	03	10	00	HSV 2 Antibodies - Total	
15	04	03	11	00	HSV 2 IgG	
15	04	03	12	00	HSV 2 IgM	
15	04	03	04	00	HSV Antibodies - Total	
15	04	03	01	00	HSV Antigen	
15	04	03	05	00	HSV IgG	
15	04	03	06	00	HSV IgM	
15	03	30			HTLV I	
15	03	30	04	00	HTLV I Antibody	
15	03	30	01	00	HTLV I Antigen	
15	03	31			HTLV II	
15	03	31	04	00	HTLV II Antibody	
15	03	31	01	00	HTLV II Antigen	
15	03	30	40	00	HTLV I - NA Reagents	
15	03	30	07	00	HTLV I Antibody - Confirmatory	
15	03	31	40	00	HTLV II - NA Reagents	
15	03	31	07	00	HTLV II Antibody - Confirmatory	
15	03	40			HTLV Multiple	
15	03	40	40	00	HTLV Multiple - NA Reagents	
15	03	40	04	00	HTLV Multiple Antibody	
15	03	40	07	00	HTLV Multiple Antibody - Confirmatory	
15	03	40	01	00	HTLV Multiple Antigen	
12	01	01	50	00	Human anti-mouse antibody	HAMA
12	05	02	05	00	Human Chorionic Gonadotropin Total	HCG
12	06	04	02	00	Human Growth Hormone	HGH
15	04	80	03	00	Human Papilloma Virus	
15	04	40	03	00	Human Papilloma Virus - NA Reagents	HPV
12	03	90	06	00	Human Placenta Like Alkaline Phosphatase	hPLAP
12	05	02	07	00	Human Placental Lactogen	HPL
16	01	01	07	00	Huntington Chorea	
15	02	24	04	00	HXV Antibody (Total)	
15	02	24	05	00	HXV Antibody IgG	
15	02	24	06	00	HXV Antibody IgM	
15	02	24	01	00	HXV Antigen	
15	02	24	02	00	HXV Antigen - Confirmatory	
11	01	01	18	00	Hydroxybutyrate Dehydrogenase	HBDH
12	06	03	11	00	Hydroxyproline	
16	01	02	05	00	Hypertension	

14	03	04			Identification (Mycology)		
14	03	04	02	00	Identification Systems for Fungi - Manual		
14	03	04	01	00	Identification Systems for Yeasts - Manual		
14	03	04	03	00	Identification Systems for Yeasts and Fungi - Automated		
14	03	04	04	00	Identification Systems for Yeasts and Fungi / NA		
12	09	02	09	00	Imipramine		
12					Immunochemistry (Immunology)		
12	01	01	30	00	Immunolectrophoresis kits		
12	01	01	31	00	Immunofixation kits		
12	01	01	01	00	Immunoglobulin A	IgA	
12	01	01	02	00	Immunoglobulin A subclass reagents		
12	01	01	03	00	Immunoglobulin D	IgD	
12	01	01	04	00	Immunoglobulin D subclass reagents		
12	02	01	04	00	Immunoglobulin E - monotest/monoresult multi Ag		
12	02	01	05	00	Immunoglobulin E - monotest/pluriresult multi Ag		
12	02	01	03	00	Immunoglobulin E - Specific, monotest/monoresult	IgE Specific	
12	02	01	02	00	Immunoglobulin E - Total (Allergy Screening)	IgE Total	
12	01	01	05	00	Immunoglobulin G	IgG	
12	01	01	06	00	Immunoglobulin G subclass reagents		
12	01	01	07	00	Immunoglobulin M	IgM	
12	01	01	08	00	Immunoglobulin M subclass reagents		
12	01	01			Immunoglobulins (without IgE)		
13	03				Immunochemistry ("Blood Grouping")		
13	03	20			Immunochemistry Controls		
13	07	01	11	00	Immunohistology kits		
14	02	03			Immunological Identification		
12	08	06			Immunosuppressant TDM		
14	02	05	02	00	Impregnated Disks, Multi-disks & Tablets		
16	01				Inborn Gene or Chromosome Alterations		
12	06				Individual and Specified Hormones		
12	50	01	15	00	Individual and Specified Hormones Calibrators		
12	50	01	16	00	Individual and Specified Hormones Controls		
15					Infectious Immunology		
15	04	80	04	00	Influenza & Para Influenza	RSV	
15	04	40	04	00	Influenza & Para Influenza - NA Reagents	RSV	
12	06	01	03	00	Insulin		
12	06	01	04	00	Insulin Antibodies		
12	06	04	05	00	Insulin-like Growth Factor Binding Protein 1	IGFBP-1	
12	06	04	06	00	Insulin-like Growth Factor Binding Protein 3	IGFBP-3	
12	06	04	03	00	Insulin-like Growth Factor I (Somatomedin C)	IGF I	
12	06	04	04	00	Insulin-like Growth Factor II	IGF II	
13	06	01	01	00	Interferons (a,b,y)		
13	06	01	11	00	Interleukins (IL-1,IL-1A,IL-1B,.. - IL-15)	IL	
13	06	01	12	00	Interleukins Receptors(IL-2R,IL6R ...)	IL-R	
12	07	02	10	00	Intrinsic Factor (blocking Antibody)	IFbAb	
16	02	01	11	00	inv (16)		
11	02	01	16	00	cr Iron (CC) IC =>12.07.01.04	Fe	
12	07	01	04	00	cr Iron (IC) CC =>11.02.01.16	Fe	
11	02	01	17	00	cr Iron Binding Capacity - Total (CC) IC =>12.07.01.05	TIBC	
12	07	01	05	00	cr Iron Binding Capacity - Total (IC) CC =>11.02.01.17	TIBC	
12	06	01	09	00	Islet Cell Ab		
14	01	04	01	00	Isolation Media (Plates)		

12	10	01	08	00	Jo-1	
12	08	03	05	00	Kanamycin	
12	01	01	20	00	Kappa and Lambda chain	
16	01	03	03	00	Klinefelter syndrome	
16	02	01	02	00	k-ras	
11	02	01	18	00	Lactate	
11	04	03	04	00	Lactate - Electrodes	
11	01	01	21	00	Lactate Dehydrogenase Isoenzymes	iso-LDH
11	01	01	19	00	Lactate Dehydrogenase L (LDH - L --> P)	LDH-L
11	01	01	20	00	Lactate Dehydrogenase P (LDH - P --> L)	LDH-P
11	70	01	04	00	Lactate Test Strips	
12	01	03	05	00	Lactoferrin	
12	03	90	07	00	Laminin	
15	04	80	13	00	LCM Virus	LCM
15	04	40	13	00	LCM Virus - NA Reagents	LCM
12	10	90	24	00	LDL Antibodies	
11	02	01	19	00	Lecithin	
15	01	05			Legionella	
15	01	05	03	00	Legionella Antibody Assays	
15	01	05	01	00	Legionella Antigen Detection	
15	01	05	40	00	Legionella Detection by NA Reagents	
15	05	10	05	00	Leishmania	
12	06	90	17	00	Leptin	
15	01	90	04	00	Leptospira	
15	01	40	04	00	Leptospira - NA Reagents	
11	01	01	22	00	Leucine Aminopeptidase	LAP
12	02	01	06	00	Leukotriene Stimulation Test	
12	70	05	04	00	LH - Rapid Test	LH
12	08	01	05	00	Lidocaine	
11	01	01	23	00	Lipase	LPS
11	50	02	02	00	Lipid Control Sera	
12	01	04	21	00	Lipoprotein (a)	LP (a)
11	02	01	34	00	Lipoprotein Electrophoresis	
11	02	01	20	00	Lipoprotein, Chemical determination/detection	
12	01	04			Lipoproteins	
15	01	13			Listeria	
15	01	13	03	00	Listeria Antibody Assays	
15	01	13	01	00	Listeria Antigen Detection	
15	01	13	40	00	Listeria Detection by NA Reagents	
15	01	13	13	00	Listeria Monocytogenes Antibody assays	
15	01	13	11	00	Listeria Monocytogenes direct Antigen detection	
11	03	01	06	00	Lithium	Li
11	04	01	04	00	Lithium - Electrodes	Li
12	12	01			Liver Function (Immunochemistry)	
12	10	90	08	00	LKM1 and Related Proteins Antibodies	
11	02	01	21	00	Low Density Lipoprotein Cholesterol	LDL-C
13	02	06	07	00	Lupus Anticoagulant	LA
12	05	01	05	00	Luteinising Hormone	LH
15	01	06	05	00	Lyme Antibody IgG	
15	01	06	06	00	Lyme Antibody IgM	
15	01	06	03	00	Lyme Antibody Total	
15	01	06	01	00	Lyme Antigen Detection	
15	01	06			Lyme Borreliosis	
15	01	06	40	00	Lyme Detection by NA Reagents	
13	04	01	06	00	Lymphocyte separation media	
13	04	01	07	00	Lymphocyte stabilizing media	
12	09	01	09	00	Lysergic acid diethylamide	LSD
11	01	01	24	00	Lysozyme	

11	03	01	07	00	Magnesium	Mg
11	04	01	05	00	Magnesium - Electrodes	Mg
11	01	01	25	00	Malate Dehydrogenase	MDH
12	03	90	16	00	Matrix-Metalloproteinases	MMP
15	04	80	07	00	Measles	
15	04	40	07	00	Measles - NA Reagents	
14	04	01	02	00	Media for Tissue Culture	
12	12	01	01	00	MEGX	
12	06	90	06	00	Melatonin	
14	02	03	04	00	Meningitis Causative Agents	
12	09	01	10	00	Methadone	
12	70	09	06	00	Methadone - Rapid Test	
12	09	01	11	00	Methaqualone	
12	08	05	01	00	Methotrexate	
14	02	04	02	00	MIC Systems - Automated	
14	02	05	01	00	MIC Systems - Manual	
14					Microbiology (Culture)	
14	01	08	90	00	Miscellaneous Buffers, Controls and Standards	
15	05	10			Miscellaneous Parasitology (Antibodies)	
13	05				Monoclonal Antibodies for Cell Surface Antigens	
13	05	01			Monoclonal Antibodies for Cell Surface Antigens	
16	01	01			Monogenetic Disorders	
15	04	04	11	00	Mononucleosis	
13	03	04	05	00	Monospecific antihuman serum	
12	09	01	12	00	Morphines	
12	06	90	18	00	Motilin	
13	07	01	06	00	Mounting media (Histology/Cytology)	
12	10	90	09	00	MPO ANCA	
42	03	04	32	00	Mucin associated Antigen IC=>12 03 01 90 00	MCA
12	50	01	30	00	Multi Constituents Immunochemistry Controls	
11	50	01			Multicomponent Control Sera (Clinical Chemistry)	
15	50	01	30	00	Multiconstituent Controls - Inf.Imm.	
12	07	30			Multiple - Anemia Related / Vitamin Tests	
11	30	01			Multiple - Clin. Chem. Lab Reagents	
12	05	30			Multiple - Fertility / Pregnancy Tests	
12	30	01			Multiple - Immunochemistry Reagents	
12	06	30			Multiple - Individual and Specified Hormones	
11	30	04	04	00	Multiple Blood Gas only - Electrodes/Biosensors	
12	70	09	70	00	Multiple Drugs of Abuse/Toxicology Rapid Tests	
11	30	01	03	00	Multiple Electrolytes only - Clin. Chem Lab R.	
11	30	04	03	00	Multiple Electrolytes only - Electrodes/Biosensors	
11	30	01	01	00	Multiple Enzymes only - Clin. Chem Lab R.	
11	30	04	01	00	Multiple Enzymes only - Electrodes/Biosensors	
11	50	30	01	00	Multiple Parameter Calibrators and Standards Electrodes/Biosensors	
					Multiple Parameter Calibrators and Standards Electrodes/Biosensors (Clinical Chemistry)	
11	50	30			Multiple Parameter Electrodes/Biosensors	
11	30	04			Multiple Parameter Electrodes/Biosensors	
11	30				Multiple Parameters - Clinical Chemistry	
12	30				Multiple Parameters - Immunochemistry	
15	30				Multiple Parameters - Infect. Immunology	

11	30	01	11	00	Multiple Parameters (Mix of all) - Clin. Chem Lab R.	
11	30	04	11	00	Multiple Parameters (Mix of all) - Electrodes/Biosensors	
16	01	02	06	00	Multiple Sclerosis	
11	30	01	02	00	Multiple Substrates only - Clin. Chem Lab R.	
11	30	04	02	00	Multiple Substrates only - Electrodes/Biosensors	
15	30	02			Multiple Viruses	
14	02	05	03	00	Multipoint Systems	
15	04	80	08	00	Mumps / Parotitis	
15	04	40	08	00	Mumps / Parotitis - NA Reagents	
15	01	07			Mycobacteria genus + species	
14	01	02	10	00	Mycobacteria Isolation Media (Tubes)	
14	01	03	10	00	Mycobacteria media (Bottles)	
14	02	05	04	00	Mycobacteria Susceptibility Testing	
15	01	07	03	00	Mycobacterial Antibody Assays	
15	01	07	01	00	Mycobacterial Antigen Detection	
15	01	07	40	00	Mycobacterial Detection by NA Reagents	
14	03				Mycology	
15	06				Mycology (Infect. Immunology)	
15	50	01	06	00	Mycology Controls - Inf.Imm.	
15	06	01			Mycology Immunoassays	
12	08	06	05	00	Mycophenolate	
15	01	08			Mycoplasma	
15	01	08	03	00	Mycoplasma Antibody Assays	
15	01	08	01	00	Mycoplasma Antigen Detection	
14	02	02	07	00	Mycoplasma - Manual	
15	01	08	40	00	Mycoplasma Detection by NA Reagents	
12	13	01	05	00	Myoglobin	MYO
42	04	05	05	00	Myoglobin	MYO
12	70	01	52	00	Myoglobin - Rapid Test	MYO
12	13	01	06	00	Myosin Light Chain	
42	04	05	06	00	Myosin Light Chain	
12	08	01	06	00	N-Acetylprocainamide	NAPA
11	01	01	26	00	N-acetyl- β ,D-Glucosaminidase	β -NAG
15	01	90	11	00	Neisseria meningitidis	
15	01	40	11	00	Neisseria meningitidis - NA Reagents	
12	04	01	03	00	Neonatal Thyroid Stimulating Hormone	n TSH
12	04	01	12	00	Neonatal Thyroxine	n T4
12	06	90	07	00	Neopterine	
12	08	03	06	00	Netilmycin	
12	10	02			Neuro-Auto-Immune Disease	
12	06	05			Neuroendocrine Function Assays	
12	03	90	08	00	Neuron Specific Enolase	NSE
12	06	05	07	00	Neurotensin	
11	02	01	22	00	Non Esterified Fatty Acids	NEFA
14	02	01	02	00	Non-fermenters - Automated	
14	02	02	02	00	Non-fermenters - Manual	
12	06	90	14	00	Noradrenalin	
12	09	02	10	00	Nortriptyline	
14	02	06			Nucleic Acid Identification (Bacteriology)	
14	02	06	02		Nucleic Acid Identification - automated	
14	02	06	01		Nucleic Acid Identification - manual	
12	10	90	18	00	Nucleosome Antibodies	

12	03	90	09	00	Oncogene DNA Probes
12	03	90	10	00	Oncogene Proteins
12	03	03			Oncoproteins
12	09	01	13	00	Opiates
12	70	09	07	00	Opiates - Rapid Test
12	06	03	12	00	Osteocalcine
16	01	02	07	00	Osteoporosis
12	10	90			Other Auto-Immune Disease
13	03	90			Other Immunohaematology Tests
12	07	02	90	00	Other Vitamin Tests
16	02	01	90	00	Other Acquired Gene or Chromosome Alteration Tests
12	02	01	90	00	Other Allergy Tests
12	10	01	90	00	Other ANA / ENA
12	07	01	90	00	Other Anemia
12	08	04	90	00	Other Anti-asthma TDM
12	08	03	90	00	Other Antibiotics TDM
13	03	03			Other Antigen Typing
13	03	03	90	00	Other Antigen typing reagents
12	08	05	90	00	Other Anti-neoplastic TDM
14	01	06	90	00	Other Automated Blood Culture
14	02	01	90	00	Other Automated Identification
14	02	04	90	00	Other Automated Susceptibility Systems
13	02	80	90	00	Other Auxiliary Reagents (Haemostasis)
15	01	40			Other Bacteriology - NA Reagents
15	01	90			Other Bacteriology Immunoassays
15	70	01	90	00	Other Bacteriology Rapid Tests
11	70	01	90	00	Other Blood Test Strips
12	06	03	90	00	Other Bone Metabolism Tests
11	04	04	90	00	Other Buffers and Solutions (Electrolytes)
11	50	03	03	00	Other Calibrators and Standards (Clinical Chemistry)
15	01	14	90	00	Other Campylobacter Reagents
12	03	01	90	00	Other Cancer Antigens
12	70	01	59	00	Other Cardiac Marker Rapid Tests
12	13	01	90	00	Other Cardiac Proteins
12	04	05	90	00	Other Cardiac Proteins
12	08	01	90	00	Other Cardiovascular TDM
12	08	02	90	00	Other Central Nervous System TDM
15	01	01	90	00	Other Chlamydia Reagents
16	01	03	90	00	Other Chromosomal Disorders Tests
11	70	90	90	00	Other Clin. Chem. Rapid Tests
11	70	90			Other Clin.Chem. Rapid Tests
11	90				Other Clinical Chemistry
11	90	01			Other Clinical Chemistry (Reagents)
15	04	02	90	00	Other CMV Reagents
13	02	02	90	00	Other Coagulation Factors
13	02	06	90	00	Other Coagulation Inhibitors
12	01	02	90	00	Other Complement Components
11	50	90			Other Controls Clinical Chemistry
12	50	01	90	00	Other Controls Immunochemistry
15	50	01	90	00	Other Controls Inf. Immunology
14	50	01	90	00	Other Controls Microbiology
14	01	01	90	00	Other DCM
14	03	01	90	00	Other DCM (Mycology)
12	06	01	90	00	Other Diabetes tests
12	09	01	90	00	Other drugs of abuse
12	70	09	90	00	Other Drugs of Abuse/Toxicology Rapid Tests
15	01	15	90	00	Other E. Coli Reagents
15	04	04	90	00	Other EBV Reagents
11	03	01	90	00	Other Electrolytes

11	04	01	90	00	Other Electrolytes Electrolytes
12	06	04	90	00	Other Endocrine Hormones (Growth Factors)
11	01	01	90	00	Other Enzymes
11	70	03	90	00	Other Faeces Tests
12	05	01	90	00	Other Fertility Function Hormones
12	70	05	90	00	Other Fertility/Pregnancy Rapid Tests
13	02	05	90	00	Other Fibrinolysis Tests
16	90				Other Genetic Testing
13	02	01	90	00	Other Global Coagulation Tests
15	01	02	90	00	Other Gonococci Reagents
15	01	04	90	00	Other H. Pylori Reagents
13	90				Other Haematology
13	90	01			Other Haematology
13	90	90	90	00	Other Haematology
13	01	20	90	00	Other Haematology Controls
13	01	90			Other Haematology Reagents
13	01	03	90	00	Other Haematology stains
13	01	09			Other Haematology Testing Reagents
13	01	02	90	00	Other Haemoglobin Testing
13	02	50	90	00	Other Haemostasis Controls
13	02	70	90	00	Other Haemostasis Rapid Tests
13	02	90			Other Haemostasis Reagents
13	02	90	90	00	Other Haemostasis Reagents
15	02	01	90	00	Other HAV Reagents
15	02	03	90	00	Other HCV Reagents
15	02	04	90	00	Other HDV Reagents
15	02	02	90	00	Other Hepatitis B Reagents
15	02	90	90	00	Other Hepatitis Virus Reagents
15	02	90			Other Hepatitis Viruses
15	70	02	90	00	Other Hepatitis Viruses Rapid Tests
15	02	05	90	00	Other HEV Reagents
15	02	07	90	00	Other HGV Reagents
13	07	01	90	00	Other Histology / Cytology reagents
15	03	01	90	00	Other HIV 1 Reagents
15	03	02	90	00	Other HIV 2 Reagents
15	03	20	90	00	Other HIV Multiple Reagents
15	03	10	90	00	Other HIV P24 Reagents
15	04	03	90	00	Other HSV Reagents
15	03	30	90	00	Other HTLV I Reagents
15	03	31	90	00	Other HTLV II Reagents
15	03	40	90	00	Other HTLV Multiple Reagents
15	02	24	90	00	Other HXV Reagents
14	03	04	90	00	Other Identification Systems for Yeasts and Fungi - Automated

12	90				Other Immunochemistry
12	90	01			Other Immunochemistry Reagents
12	01	01	90	00	Other Immunoglobulins
14	02	03	90	00	Other Immunological Identification
12	08	06	90	00	Other Immunosuppressant TDM
12	06	90	90	00	Other Individual and Specified Hormones
12	06	90			Other Individual and Specified Hormones
15	90				Other Infectious Immunology
15	90	90			Other Infectious Immunology Reagents
15	01	05	90	00	Other Legionella Reagents
12	01	04	90	00	Other Lipoproteins
15	01	13	90	00	Other Listeria Reagents
12	12	01	90	00	Other Liver Function
15	01	06	90	00	Other Lyme Borelliosis Reagents
13	06	01	90	00	Other Lymphokines /Immunomodulators
14	01	05	90	00	Other Manual Blood Culture (Concentrators, Antibiotic Inactivators etc.)
14	02	02	90	00	Other Manual Identification (Optichin, Bacitracin etc.)
14	02	05	90	00	Other Manual Susceptibility Testing
14	01	03	90	00	Other Media in Bottles
14	01	02	90	00	Other Media in Tubes
14	90				Other Microbiology
14	70	01	90	00	Other Microbiology Rapid Tests
13	05	01	90	00	Other Monoclonal Antibodies
16	01	01	90	00	Other Monogenetic Disorders Tests
11	50	01	90	00	Other Multicomponent Sera (CC)
12	05	30	90	00	Other Multiple Anemia / Vitamin Tests
12	07	30	90	00	Other Multiple Anemia / Vitamin Tests
11	30	01	90	00	Other Multiple Clin. Chem Lab Reagents
12	30	01	90	00	Other Multiple Immunochemistry Reagents
12	06	30	90	00	Other Multiple Ind. A. Spec. Hormones
11	30	04	90	00	Other Multiple Parameter - Electrodes/Biosensors
15	30	02	90	00	Other Multiple Viruses
15	01	07	90	00	Other Mycobacteria Reagents
15	06	01	90	00	Other Mycology Immunoassays
15	01	08	90	00	Other Mycoplasma Reagents
12	06	05	90	00	Other Neoendocrine Function Assays
12	10	02	90	00	Other Neuro-Auto-Immunology
12	03	03	90	00	Other Oncoproteins
12	12	90			Other Organ Function Assays
12	12	90	90	00	Other Organ Function Assays
12	10	90	90	00	Other Other Auto-Immune Disease Tests
13	03	90	90	00	Other Other Immunohaematology Tests
15	01	40	90	00	Other Other Bacteriology - NA Reagents
15	01	90	90	00	Other Other Bacteriology Immunoassays
11	90	01	90	00	Other Other Clinical Chemistry Reagents
11	50	90	90	00	Other Other Controls Clinical Chemistry
16	90	90	01	90	Other Other Genetic Tests
13	01	90	90	00	Other Other Haematology Reagents
13	01	09	90	00	Other Other Haematology Testing Reagents
12	90	90			Other Other Immunochemistry Reagents
12	90	90	90	00	Other Other Immunochemistry Reagents
15	90	90	90	00	Other Other Infectious Immunology Reagents
14	90	90	90	00	Other Other Microbiology Tests
12	01	90	90	00	Other Other Plasma Proteins
12	03	90	90	00	Other Other Tumour Markers

15	04	90			Other Other Virology
15	70	90	90	00	Other Other Virology Rapid Tests
15	04	90	90	00	Other Other Virology Reagents
14	05	02	90	00	Other Parasite Antigen Detection
15	05	10	90	00	Other Parasitology
14	05	01	90	00	Other Parasitology Stains
16	01	02	90	00	Other Polygenetic Disorders Tests
16	01	04	90	00	Other Polymorphism Tests
12	05	02	90	00	Other Pregnancy Testing Hormones
14	01	04	90	00	Other Prepared Media in Plates
14	03	02	90	00	Other Prepared Media in Plates (Mycology)
13	02	04	90	00	Other Primary Hemostasis/ Platelet Factors Tests
15	01	09	90	00	Other Pseudomonas Aeruginosa Reagents
13	01	70	90	00	Other Rapid Haematology Tests
13	01	01	90	00	Other Reagents for Haematology Analyzer
12	03	02	90	00	Other Receptor Assays
12	06	02	90	00	Other Renal metabolism tests
15	70	03	90	00	Other Retroviruses Rapid Tests
12	11	01	90	00	Other Rheumatoid Factors
12	70	11	90	00	Other Rheumatoid Rapid Tests
15	04	01	90	00	Other Rubella Virus Reagents
15	01	10	90	00	Other Salmonella Reagents
14	03	05	90	00	Other Serological Identification of Yeasts and Fungi
13	02	03	90	00	Other Special Coagulation Tests
11	50	02	90	00	Other Specific Control Sera (CC)
12	01	90			Other Specific Proteins
12	70	01	90	00	Other Specific Proteins Rapid Tests
14	01	08	02	00	Other Stains
12	50	01	80	00	Other Standards / Calibrators Immunochemistry
15	01	12	90	00	Other Staphylococci Reagents
15	01	11	90	00	Other Streptococci Reagents
11	04	03	90	00	Other Substrate - Electrodes / Biosensors
11	02	01	90	00	Other Substrates
14	03	06	90	00	Other Susceptibility Systems for yeasts and Fungi
15	01	03	90	00	Other Syphilis Reagents
12	04	01	90	00	Other thyroid hormones
12	10	03	90	00	Other Thyroid-Auto-Immune Disease Tests
14	04	01	04	00	Other Tissue Culture Additives and Solutions
13	04	01	90	00	Other Tissue Typing Reagents
12	09	02	90	00	Other Toxicology
15	05	01	90	00	Other Toxoplasma Antibody
12	01	03	90	00	Other Transport Proteins
14	03	03	90	00	Other Tubes Media for yeasts and Fungi
12	70	03	90	00	Other Tumour Marker Rapid Tests
12	03	90			Other Tumour Markers
14	01	07	90	00	Other Urine Screening (Bacteriology)
11	70	02	90	00	Other Urine Testing
15	04	80	90	00	Other Viral Antigen/Antibody Detection
15	04	40			Other Virology - NA Reagents
15	04	40	90	00	Other Virology - NA Reagents
14	04	01	90	00	Other Virology (Microbiology) Reagents
15	04				Other Virology (Infect. Immunology)
15	04	80			Other Virology Antigen/Antibody Detection
15	50	01	04	00	Other Virology Controls - Inf.Imm.
15	70	90			Other Virology Rapid Tests
11	02	01	23	00	Oxalate
11	04	02	03	00	Oxygen - Electrodes
12	06	90	08	00	Oxytocin

42	03	90	15	00	P-53	P 53
12	03	03	02	00	p53	p53
16	02	01	01	00	p53	
14	01	05	03	00	Paediatric (Blood Culture - Manual)	
14	01	06	02	00	Paediatric Bottles (Blood Culture -Autom.)	
14	05				Parasitology (Microbiology)	
15	05				Parasitology (Infect. Immunology)	
15	50	01	05	00	Parasitology Controls - Inf.Imm.	
14	05	01	01	00	Parasitology Extraction Reagents	
14	05	01	02	00	Parasitology Stains	
12	06	03	14	00	Parathyroid Hormone (C-/N-terminal, M-regional)	
12	06	03	13	00	Parathyroid Hormone intact	PTH
12	06	03	15	00	Parathyroid Hormone related Peptide	PTHrP
12	10	90	11	00	Parietal Cell Antibodies	
15	04	80	09	00	Parvovirus B 19	
15	04	40	09	00	Parvovirus B 19 - NA Reagents	
16	01	03	04	00	Patau Syndrome	
11	01	01	27	00	Pepsin	PPS
12	06	90	09	00	Pepsinogen	
11	04	02	02	00	pH - Electrodes	pH
12	09	01	14	00	Phencyclidine	PCP
12	70	09	08	00	Phencyclidine - Rapid Test	PCP
12	08	02	07	00	Phenobarbital	
12	09	02	11	00	Phenols	
44	04	04	32	00	Phenylketonuria	PKU
11	02	01	36	00	Phenylketonuria	
12	08	02	08	00	Phenytoin	
11	03	01	08	00	Phosphate inorganic / Phosphorus	PO3
11	01	01	28	00	Phospho Hexose Isomerase	PHI
11	02	01	24	00	Phospholipids	
13	02	05	04	00	Plasmin	
13	02	03	07	00	Plasmin - a2 - Antiplasmin Complex	PAP
13	02	05	05	00	Plasminogen	PLG
13	02	05	06	00	Plasminogen Activator-Inhibitors	PAI
14	05	02	02	00	Plasmodium falciparum	
13	01	20	05	00	Platelet Control	
13	02	04	02	00	Platelet Factor 4	PF4
44	04	04	04	00	Plates for Environmental Testing	
12	10	01	09	00	PM-Scl - Antibodies	
14	05	02	01	00	Pneumocystis carinii	
16	01	01	08	00	Polycystic Kidney Disease	
16	01	02			Polygenetic Disorders	
16	01	04			Polymorphisms	
13	03	04	04	00	Polyspecific antihuman serum	
11	02	01	25	00	Porphobilinogen	
11	03	01	09	00	Potassium	K
11	04	01	06	00	Potassium - Electrodes	K
14	03	02	01	00	PPM for Yeasts and Fungi	
12	10	90	10	00	PR3 ANCA	
12	01	03	06	00	Pre-albumin / Transthyretin	
12	05	02	10	00	Pregnancy associated Plasma Protein - A (Downs)	PAPP-A
12	05	02	08	00	Pregnancy Specific B1 -glycoprotein	B1SP1

12	05	02			Pregnancy Testing Hormones / Proteins				
13	02	02	19	00	Prekallikrein / Kallikrein (Fletcher factor)				
14	01	03			Prepared Media in Bottles (Bacteriology)				
14	03	02			Prepared Media in Plates (Mycology)				
14	01	04			Prepared Media in Plates (Bacteriology)				
14	01	02			Prepared Media in Tubes (Bacteriology)				
13	07	01	09	00	Primary antisera for immunohistology				
12	08	02	09	00	Primidone				
13	02	03	10	00	Pro C Global				
13	02	06	12	00	Pro C Global				
12	08	01	07	00	Procainamide				
12	06	90	16	00	Procalcitonin				
13	06	01	07	00	Procollagen Type I N terminal propeptide				PiNP
12	05	01	06	00	Progesterone				PRG
12	03	02	02	00	Progesterone Receptor Assays				PR
12	06	01	08	00	Proinsulin				
12	05	01	08	00	Prolactin				PRL
12	09	01	15	00	Propoxyphene				
12	08	01	08	00	Propranolol				
13	02	04	03	00	Prostacyclin				
12	06	90	10	00	Prostaglandin				
12	03	01	37	00	cr Prostatic Acid Phosphatase (IC)	CC =>11.01.01.02			PAP
12	03	04	40	00	Prostatic Specific Antigen				PSA
13	02	06	08	00	Protein C				PC
11	02	01	35	00	Protein Electrophoresis				
13	02	06	09	00	Protein S				PS
12	03	90	18	00	Protein S-100 B				S-100B
15	01	90	12	00	Proteus				
15	01	40	12	00	Proteus - NA Reagents				
13	02	03	08	00	Prothrombin Fragment 1 + 2				F 1+2
16	01	01	14	00	Prothrombin Mutation				
13	02	01	01	00	Prothrombin time (Quick Test)				PT
13	02	70	01	00	Prothrombin Time Rapid Test				
12	09	02	12	00	Protoporphyrin IX				
12	70	03	11	00	PSA - Rapid Test				PSA
15	01	90	13	00	Pseudomonas				
15	01	40	13	00	Pseudomonas - NA Reagents				
15	01	09			Pseudomonas Aeruginosa				
15	01	09	03	00	Pseudomonas Aeruginosa Antibody IgG				
15	01	09	40	00	Pseudomonas Detection by NA Reagents				
12	06	03	16	00	Pyridinoline				PYD
11	02	01	26	00	Pyruvate				
12	08	01	09	00	Quinidine				
12	08	06	04	00	Rapamycin (Sirolimus)				

13	01	70			Rapid Haematology Tests (Point-Of-Care/Near Patient)	
14	02	02	08	00	Rapid Single Tests (Catalase, Oxidase etc.)	
14	02	05	05	00	Rapid Single Tests (Cefinase etc.)	
11	70				Rapid Tests - Clinical Chemistry	
12	70				Rapid Tests - Immunochemistry	
15	70				Rapid Tests - Infectious Immunology	
14	70				Rapid Tests - Microbiology	
14	70	01			Rapid Tests - Microbiology	
14	01	01	03	00	Raw materials for preparing DCM	
1					REAGENTS	
13	01	01			Reagents for (Automated) Haematology Analyzer	
12	03	02			Receptor Assays	
11	04	04	01	00	Reference Electrodes	
11	04	04			Reference Material and Buffers (Electrolytes)	
13	02	50	01	00	Reference Calibration Plasmas	
12	06	02			Renal Metabolism Assays	
12	06	02	05	00	Renine (Plasma Renine Activity)	
15	04	80	05	00	Respiratory Syncytial Virus (RSV)	
15	04	40	05	00	Respiratory Syncytial Virus (RSV) - NA Reagents	
16	02	01	04	00	ret	
13	01	20	06	00	Reticulocyte Control	
12	07	01	07	00	Reticulocyte Haemoglobin Content	CHr
12	01	03	07	00	Retinol Binding Protein	RBP
15	50	01	03	00	Retrovirus Controls - Inf.Imm.	
15	03				Retroviruses	
15	70	03			Retroviruses Rapid Test	
12	04	01	04	00	Reverse Triiodothyronine	Rev T3
13	03	02	01	00	Rhesus D	
13	03	02	02	00	Rhesus Phenotypes	
13	03	02			Rhesus Typing	
12	11				Rheumatoid Diseases	
12	11	01			Rheumatoid Diseases	
12	11	01	10	00	Rheumatoid Factors	RF
12	70	11			Rheumatoid Rapid Tests	
12	50	01	14	00	Rheumatoid/Autoimmune Controls	
12	50	01	13	00	Rheumatoid/Autoimmune Standards / Calibrators	
12	10	90	20	00	Ribosomal Phosphoprotein Antibodies	
15	01	90	05	00	Rickettsia	
15	01	40	05	00	Rickettsia - NA Reagents	
13	01	03	02	00	Romanowsky stains	
15	04	80	06	00	Rotavirus	
15	04	40	06	00	Rotavirus - NA Reagents	
15	70	90	02	00	RSV - Rapid Test	
15	04	01	40	00	Rubella - NA Reagents	
15	04	01			Rubella Virus	
15	04	01	04	00	Rubella Virus Antibodies - Total	
15	04	01	05	00	Rubella Virus IgG	
15	04	01	06	00	Rubella Virus IgM	
12	10	90	19	00	Saccharomyces cerevisiae Antibodies	
12	09	02	13	00	Salicylate	

15	01	10			Salmonella	
15	01	10	03	00	Salmonella Antibody Assays	
15	01	10	01	00	Salmonella Antigen Detection	
15	01	10	40	00	Salmonella Detection by NA Reagents	
14	01	02	21	00	Sample transport for NA Testing	
15	05	10	06	00	Schistosoma	
12	10	01	10	00	Scl-70	
13	07	01	10	00	Secondary antisera for immunohistology	
14	05	02			Serological Detection and Identification (Parasitology)	
14	03	05			Serological Identification (Mycology)	
14	03	05	01	00	Serological Identification of Yeasts and Fungi	
12	03	90	17	00	Serotonine	
12	06	90	11	00	Serotonin-Uptake (Platelets)	
14	02	03	01	00	Serotyping (E.coli, Salmonella, Shigella, etc.)	
14	04	01	03	00	Serum for Tissue Culture	
12	01	03	10	00	Serum Soluble Transferrin Receptor	sTf R
12	05	01	09	00	Sex Hormone Binding Globulin	SHBG
15	01	90	14	00	Shigella	
15	01	40	14	00	Shigella - NA Reagents	
16	01	01	09	00	Sickle Cell Anemia	
12	08	03	07	00	Sisomycin	
12	10	01	11	00	Sm	
11	03	01	10	00	Sodium	Na
11	04	01	07	00	Sodium - Electrodes	Na
13	06	01	03	00	Soluble Antigens / Receptors	
12	06	05	08	00	Somatostatin	
11	01	01	29	00	Sorbitol Dehydrogenase	SDH
12	10	90	12	00	Sp 100 Antibodies	
13	02	03			Special Coagulation Tests	
12	02	01	10	00	Specific Allergenes	
11	50	02			Specific Control Sera (Clinical Chemistry)	
12	12				Specific Organ Function Assays	
12	50	01	06	00	Specific Protein Controls	
12	50	01	05	00	Specific Protein Standards / Calibrators	
12	01				Specific Proteins	
12	70	01			Specific Proteins Rapid Tests (Cardiac Markers)	
13	01	01	10	00	Specific Reticulocyte reagents	
12	10	90	13	00	Sperm Antibodies	
16	01	01	13	00	Spihocerebellar Ataxins Type 1,2,3,6,7,8	
12	03	01	35	00	Squamous Cell Carcinoma Antigen	SCC
12	10	01	06	00	ss DNA - Antibodies	
12	05	02	06	00	β Human Chorionic Gonadotropin (incl. subunit)	β HCG
12	10	01	12	00	SS-A	
12	10	01	13	00	SS-B	
12	06	05	02	00	β -Endorphin	
13	02	04	05	00	β -Thromboglobulin	BTG
13	07	01	07	00	Stain powders (Histology/Cytology)	
13	07	01	08	00	Stain solutions (Histology/Cytology)	
14	01	08			Stains, Buffers etc (Bacteriology)	
15	01	12	01	00	Staphylococcal Direct Antigen Detection	
15	01	12			Staphylococci	
14	02	03	03	00	Staphylococci	
14	02	01	04	00	Staphylococci - Automated	
14	02	02	04	00	Staphylococci - Manual	
15	01	12	40	00	Staphylococci Detection by NA Reagents	
15	01	12	11	00	Staphylotoxin	

15	70	01	03	00	Strep A - Rapid Test	
15	70	01	04	00	Strep B - Rapid Test	
15	01	11	01	00	Streptococcal Direct Antigen Detection	
14	02	03	02	00	Streptococci	
15	01	11			Streptococci	
14	02	01	03	00	Streptococci - Automated	
14	02	02	03	00	Streptococci - Manual	
15	01	11	40	00	Streptococci Detection by NA Reagents	
12	08	03	08	00	Streptomycin	
12	06	05	09	00	Substance P	
11	04	04	04	00	Substrate Electrode Buffers and Solutions	
11	04	03			Substrate Electrodes / Biosensors	
14	01	04	02	00	Substrate Incorporated ID Media (Plates)	
14	03	02	02	00	Substrate Incorporated Media for Yeasts and Fungi	
11	02				Substrates	
11	02	01			Substrates	
15	90	90	40	00	Supplem. Reagents, etc - NA Reagents	
14	01	04	03	00	Susceptibility Test Media (Plates)	
14	03	06			Susceptibility Testing (Mycology)	
14	02	04			Susceptibility Testing - Automated	
14	02	05			Susceptibility Testing - Manual	
14	01	03	03	00	Susceptibility Testing (Bottles)	
14	03	06	01	00	Susceptibility Testing Systems for Yeasts and Fungi	
15	70	01	05	00	Syphilis - Rapid Test	
15	01	03			Syphilis (Treponema pallidum)	
15	01	03	03	00	Syphilis Antibody Assays Total	
15	01	03	05	00	Syphilis Antibody IgG	
15	01	03	06	00	Syphilis Antibody IgM	
15	01	03	01	00	Syphilis Antigen Detection	
15	01	03	40	00	Syphilis detection by NA Reagents	
42	40	90	14	00	Systemic Lupus Erythematosus	SLE
12	10	01	16	00	Systemic Lupus Erythematosus	SLE
14	01	06	10	00	Systems for Mycobacteria - Automated	
14	02	04	04	00	Systems for Mycoplasma (inc. combined with I.D.)	
16	02	01	10	00	t(14;18)	
16	02	01	09	00	t(8;14)	
16	02	01	08	00	t(9;22)	
12	08	06	03	00	Tacrolimus	
12	06	03	17	00	Tartrate-resistant Acid Phosphatase 5b	TRAP
16	01	01	10	00	Tay Sachs Disease	
12	50	01	02	00	TDM/Drug Controls	
12	50	01	01	00	TDM/Drug Standards / Calibrators	

12	70	09			TDM/Drugs of Abuse/Toxicology Rapid Tests	
12	08	03	11	00	Teicoplanine	
16	02	01	12	00	Telomerase	
12	05	01	10	00	Testosterone (with Dehydro and Free Testosterone)	
15	01	90	09	00	Tetanus (Clostridium T.)	
15	01	40	09	00	Tetanus (Clostridium T.) - NA Reagents	
16	01	01	11	00	Thalassaemia	
12	08	04	02	00	Theophylline	
12	70	09	11	00	Theophylline - Rapid Test	
12	08				Therapeutic Drug Monitoring	
13	02	05	09	00	Thrombin Activating Fibrinolysis Inhibitor	TAFI
13	02	01	03	00	Thrombin Time / Reptilase / Batroxobin Time	TT
13	02	03	09	00	Thrombin-Antithrombin III-Complex	TAT
13	02	04			Thrombophilia Markers / Platelet Factors	
13	02	04	04	00	Thromboxane	
12	03	90	12	00	Thymidine Kinase	TK
11	02	01	27	00	Thymol	
12	04	01	08	00	Thyroglobulin	TG
12	10	03	04	00	Thyroglobulin Autoantibodies	Anti-TG
12	04	01	09	00	Thyroid binding globulin	TBG
12	04				Thyroid Function Hormones	
12	04	01			Thyroid Function Hormones	
12	10	03	02	00	Thyroid Microsomal Antibodies	
12	10	03	01	00	Thyroid Peroxydase (incl. Microsomal) Antibodies	Anti-TPO
12	04	01	11	00	Thyroid Stimulating Hormone	TSH
12	10	03			Thyroid-Auto-Immune Disease	
12	06	01	07	00	Thyrosin Phosphatase IA2 Antibodies	
12	04	01	07	00	Thyroxine	T4
12	03	90	13	00	Tissue Associated Protein	TAP
14	04	01			Tissue Culture	
13	02	05	07	00	Tissue Plasminogen Activator	tPA
12	10	90	21	00	Tissue Transglutaminase Antibodies	
12	10	90	22	00	Tissue Transglutaminase/ Gliadin Antibodies Combitest	
13	04				Tissue Typing Reagents	
13	04	01			Tissue Typing Reagents	
12	08	03	09	00	Tobramycin	
12	01	02	11	00	Total Complement Activity (CH50)	CH50
11	02	01	28	00	Total Lipids	
11	02	01	29	00	Total Porphyrine	
12	03	01	32	00	Total Prostatic Specific Antigen	tPSA
11	02	01	30	00	Total Protein	
12	09	02	19	00	Tox adulteration	

12	09	02					Toxicology		
15	05	01					Toxoplasma		
15	05	01	04	00			Toxoplasma Antibody (Total)		
15	05	01	05	00			Toxoplasma Antibody IgG		
15	05	01	06	00			Toxoplasma Antibody IgM		
12	01	03	09	00			Transcobalamin (S)		
12	01	03	08	00			Transferrin		
12	07	01	06	00			Transferrin Receptor		
14	01	02	20	00			Transport Media (Tubes)		
12	01	03					Transport Proteins		
12	09	02	14	00			Trichloroacetic Acid		
12	70	09	10	00			Tricyclic Antidepressants - Rapid Test		TAD
12	09	02	15	00			Tricyclic Antidepressants (Total)		TAD
11	70	01	05	00			Triglyceride Test Strips		
11	02	01	31	00			Triglycerides		
12	04	01	05	00			Triiodothyronine		T3
12	04	01	06	00			Triiodothyronine Uptake		T3-U
12	05	30	01	00			Trisomia 21 incl. AFP / βHCG with/without Free Estriol		
12	13	01	07	00			Troponin (T + I)		
12	04	05	07	00			Troponin (T + I)		
12	70	01	53	00			Troponin I/T - Rapid Test		
11	01	01	30	00	cr		Trypsin (CC)	IC =>12.01.90.07	TPS
12	01	90	07	00	cr		Trypsin (IC)	CC =>11.01.01.30	
12	01	90	08	00			Trypsin Neonatal		IRT
12	01	90	06	00			Trypsin-a1-Antitrypsin (Elastase)		
12	10	03	03	00			TSH Receptor Antibodies		
14	03	03					Tubes and Bottled Media for Yeasts and Fungi		
14	03	03	01	00			Tubes and Bottled Media for Yeasts and Fungi		
12	03	01	36	00			Tumor Polypeptide Antigen (TPA - incl. TPS)		TPA
12	03						Tumour Marker		
12	50	01	10	00			Tumour Marker Controls		
12	50	01	09	00			Tumour Marker Standards / Calibrators		
12	70	03					Tumour Markers Rapid Tests		
13	06	01	04	00			Tumour Necrosis Factors (TNFa, TNFb)		TNF
13	06	01	05	00			Tumour Necrosis Factors Receptors (TNF-R1, TNF-R2)		TNF-R
16	01	03	05	00			Turner Syndrome		
12	10	01	14	00			U1-snRNP - Antibodies		
11	50	01	04	00			Unassayed Multicomponent Sera - Abnormal (CC)		
11	50	01	03	00			Unassayed Multicomponent Sera - Normal (CC)		
11	04	03	05	00			Urea - Electrodes		
11	70	01	06	00			Urea Test Strips		
11	02	01	04	00			Urea/Blood Urea Nitrogen		BUN
11	02	01	32	00			Uric Acid		
11	70	02	02	00			Urine Multi-constituent Test Strips		

14	01	07			Urine Screening (Bacteriology)	
14	01	07	02	00	Urine Screening Manual (Strips etc.)	
14	01	07	01	00	Urine Screening Systems - Automated	
11	70	02	10	00	Urine SedimentTest Kit	
11	70	02	01	00	Urine Single Test Strips (incl. tablets)	
11	70	02			Urine Testing (CC)	
12	09	02	16	00	Uro/Coproporphyrins	
13	02	05	08	00	Urokinase Plasminogen Activator	UPA
12	08	02	10	00	Valproic Acid	
12	08	03	10	00	Vancomycin	
12	09	02	17	00	Vanillylmandelic Acid	VMA
15	04	80	10	00	Varicella Zoster	
15	04	40	10	00	Varicella Zoster Virus - NA Reagents	
12	06	04	07	00	Vasointestinal Peptide	VIP
12	06	04	08	00	Vasopressin	
14	04				Viral Culture	
12	07	30	01	00	Vitamin B 12 / Folate	
12	07	02	01	00	Vitamin B1	
12	07	02	04	00	Vitamin B12	
12	07	02	02	00	Vitamin B2	
12	07	02	03	00	Vitamin B6	
12	07	02	05	00	Vitamin D (Cholecalciferol)	
12	07	02			Vitamines	
13	01	20	07	00	Whole Blood Calibrators	
15	01	90	06	00	Yersinia	
15	01	40	06	00	Yersinia - NA Reagents	
11	02	01	33	00	Zinc	
13	03	01	90	00		
13	03	02	90	00		
13	03	20	90			